



ARIYA

2025



limited by weight and distribution. Always secure cargo. Heavy loading of the vehicle with cargo, especially on the roof, will affect the handling and stability of the vehicle. ¹⁶For Level 2 home charging use only a 240-volt dock on a dedicated outlet. See Customer Disclosure Form for details. 240-V home charging dock sold separately. Not a Nissan product. Some chargers may not be compatible with your ARIYA. Contact charger manufacturer before purchase for information on compatibility and warranty. Nissan does not warrant and is not responsible for loss, including consequential, incidental, or other damages caused by charger defects, charger incompatibility, or installation services. ¹⁷Targeted 2025 MY EPA-estimated range up to 289 miles for combined city/highway driving for EVOLVE+ FWD. Targeted 2025 MY EPA-estimated range up to 216 miles for combined city/highway driving for ENGAGE FWD. Targeted 2025 MY EPA-estimated range up to 205 miles for combined city/highway driving for ENGAGE Dual Motor e-4ORCE AWD. Targeted 2025 MY EPA-estimated range up to 272 miles for ENGAGE+ Dual Motor e-4ORCE AWD and EVOLVE+ Dual Motor e-4ORCE AWD. Targeted 2025 MY EPA-estimated range up to 267 miles for PLATINUM+ Dual Motor e-4ORCE AWD and 257 miles for PLATINUM+ Dual Motor e-4ORCE AWD with optional 20" wheels. Targeted 2025 EPA Fuel Economy Estimates equivalent to 105 City, 91 Highway for EVOLVE+ FWD. Based on EPA formula of 33.7 kW/hour equal to one gallon of gasoline energy, and on Nissan internal testing results, subject to EPA confirmation. EPA data not available at time of publication. Targeted estimates for EVOLVE+ FWD are equivalent to 105 MPG measured as gasoline fuel efficiency in city driving, and 91 MPG in highway driving. Targeted 2025 EPA Fuel Economy Estimates equivalent to 109 City, 94 Highway for ENGAGE FWD. Based on EPA formula of 33.7 kW/hour equal to one gallon of gasoline energy, and on Nissan internal testing results, subject to EPA confirmation. EPA data not available at time of publication. Targeted estimates for ENGAGE FWD are equivalent to 109 MPG measured as gasoline fuel efficiency in city driving, and 94 MPG in highway driving. Targeted 2025 EPA Fuel Economy Estimates equivalent to 101 City, 89 Highway for ENGAGE Dual Motor e-4ORCE AWD. Based on EPA formula of 33.7 kW/hour equal to one gallon of gasoline energy, and on Nissan internal testing results, subject to EPA confirmation. EPA data not available at time of publication. Targeted estimates for ENGAGE Dual Motor e-4ORCE AWD are equivalent to 101 MPG measured as gasoline fuel efficiency in city driving, and 89 MPG in highway driving. Targeted 2025 EPA Fuel Economy Estimates equivalent to 97 City, 86 Highway for ENGAGE+ Dual Motor e-4ORCE AWD and EVOLVE+ Dual Motor e-4ORCE AWD. Based on EPA formula of 33.7 kW/hour equal to one gallon of gasoline energy, and on Nissan internal testing results, subject to EPA confirmation. EPA data not available at time of publication. Targeted estimates for ENGAGE+ Dual Motor e-4ORCE AWD and EVOLVE+ Dual Motor e-4ORCE AWD are equivalent to 97 MPG measured as gasoline fuel efficiency in city driving, and 86 MPG in highway driving. Targeted 2025 EPA Fuel Economy Estimates equivalent to 93 City, 87 Highway for PLATINUM+ Dual Motor e-4ORCE AWD. Based on EPA formula of 33.7 kW/hour equal to one gallon of gasoline energy, and on Nissan internal testing results, subject to EPA confirmation. EPA data not available at time of publication. Targeted estimates for PLATINUM+ Dual Motor e-4ORCE AWD are equivalent to 93 MPG measured as gasoline fuel efficiency in city driving, and 87 MPG in highway driving. Targeted 2025 EPA Fuel Economy Estimates equivalent to 89 City, 84 Highway for PLATINUM+ Dual Motor e-4ORCE AWD with optional 20" wheels. Based on EPA formula of 33.7 kW/hour equal to one gallon of gasoline energy, and on Nissan internal testing results, subject to EPA confirmation. EPA data not available at time of publication. Targeted estimates for PLATINUM+ Dual Motor e-4ORCE AWD with optional 20" wheels are equivalent to 89 MPG measured as gasoline fuel efficiency in city driving, and 84 MPG in highway driving. Actual mileage will vary with trim levels, options, and driving conditions. See Customer Disclosure Form for details. Use for comparison only. ¹⁸Actual route at time of departure may vary due to battery level at trip departure, changes in traffic, etc. that could affect the original trip plan. ¹⁹**Nissan vehicle with "SiriusXM with 360L" capability:** SiriusXM with 360L trial period is included with the purchase or lease of a new Nissan vehicle if: (i) vehicle is equipped with SiriusXM with 360L capability and (ii) vehicle is purchased or leased from new Nissan dealer stock. Trial period begins on the purchase or lease date of the qualifying new Nissan vehicle. SiriusXM with 360L is owned and operated by SiriusXM, use of SiriusXM account and its services and features are subject to the SiriusXM Customer Agreement and Privacy Policy available at [siriusxm.com](https://www.siriusxm.com), and are not within Nissan's control. Should SiriusXM terminate, change, or restrict service or features, service or features may be suspended or terminated without notice or with no liability to Nissan or its partners or agents. Nissan and its partners or agents are also not responsible for associated costs or other third party changes that may be required for continued operation due to cellular network unavailability, restriction, or termination (including equipment replacements/upgrades, if available, or roaming charges on alternative networks). Trial period is subject to change or early termination at any time without notice. SiriusXM and related logos are trademarks of Sirius XM Radio Inc. and its respective subsidiaries. **SiriusXM and SiriusXM with 360L Trial Subscription:** Service will automatically stop at the end of your trial subscription period unless you decide to continue service. Trial is non-transferable. If you do not wish to enjoy your trial, you can cancel by calling the number below. All SiriusXM services require a subscription, each sold separately by SiriusXM after the trial period. **Service subject to the SiriusXM Customer Agreement and Privacy Policy, visit [siriusxm.com](https://www.siriusxm.com) for complete terms and how to cancel which includes online methods or calling 1-866-635-2349.** Some services and features are subject to device capabilities and location availability. Satellite service not available in AK & HI. Certain features and/or content may not be available in vehicles with SiriusXM with 360L unless an active data connection is enabled in the vehicle. Content varies by SiriusXM subscription package. All fees, content and features are subject to change. ²⁰ProPILOT Park is not a substitute for driver's attention to the immediate surroundings. See Owner's Manual for safety information. ²¹For complete information concerning warranty coverage, conditions, limitations, and exclusions, see your Nissan dealer, **parts.NissanUSA.com**, and read your vehicle's Warranty Information Booklet. ²²Accessories shown are not genuine Nissan parts/accessories. Not warranted by Nissan. Refer to product manufacturer for warranty details. Nissan limited warranty does not cover damages or failures to the vehicle caused by improper installation or alterations of any accessory or component. Contact your dealer for details. ²³Towing capacity varies by configuration. See Nissan Towing Guide and Owner's Manual for additional information. Always secure cargo. ²⁴Compatible smartphone and vehicle remote engine start system required. Virtual Key to be used only in accordance with laws or rules in effect in your vehicle's location. Actual maximum distance for operation will vary depending on obstructions between compatible device and vehicle. ²⁵Dual Camera Drive Recorder to be used only in accordance with any laws or rules in effect in your vehicle's location that may apply to audio or video recordings of drivers and passengers. ²⁶Vehicle shown is for illustrative purposes only. Not representative of brochure's model year/model. ²⁷Only front kick plates illuminate. ²⁸214 Horsepower for ENGAGE FWD. 238 Horsepower for EVOLVE+ FWD. 335 Horsepower for ENGAGE Dual Motor e-4ORCE AWD. 389 Horsepower for ENGAGE+ Dual Motor e-4ORCE AWD, EVOLVE+ Dual Motor e-4ORCE AWD, and PLATINUM+ Dual Motor e-4ORCE AWD. ²⁹Nissan calculation using 1-ft rollout testing with long-range battery and Dual Motor e-4ORCE AWD only in Sport Mode and with e-Step off. Actual acceleration may vary. These results are for comparison only and should not be attempted on public roads. ³⁰ProPILOT Assist and ProPILOT Assist with Navli-link cannot prevent collisions. It is the driver's responsibility to be in control of the vehicle at all times. Always monitor traffic conditions and keep both hands on the steering wheel. System operates only when lane markings are detected. Does not function in all weather, traffic and road conditions. System has limited control capability and the driver may need to steer, brake or accelerate at any time to maintain safety. See Owner's Manual for safety information. ³¹Nissan Safety Shield technologies can't prevent all collisions or warn in all situations. See Owner's Manual for important safety information. ³²Do not use for extended periods of time. See Owner's Manual for important safety information. ³³Intelligent Around View® Monitor cannot eliminate blind spots and may not detect every object. Driver should always turn and check surroundings before driving. See Owner's Manual for safety information. ³⁴Intelligent Rear View Mirror may not detect every object and does not eliminate blind spots or warn of moving objects. See Owner's Manual for safety information. ³⁵e-Step does not bring the vehicle to a complete stop. Monitor traffic conditions and use conventional brake as needed. See Owner's Manual for safety information. ³⁶Brake Assist cannot prevent all collisions and may not provide warning or braking in all conditions. Driver should monitor traffic conditions and brake as needed to prevent collisions. See Owner's Manual for safety information. ³⁷Intelligent Cruise Control uses limited braking and is not a collision avoidance or warning system. Driver should monitor traffic conditions and brake as needed to prevent collisions. See Owner's Manual for safety information. ³⁸Intelligent Forward Collision Warning cannot prevent collisions. See Owner's Manual for safety information. ³⁹Automatic Emergency Braking with Pedestrian Detection cannot prevent all collisions and may not provide warning or braking in all conditions. Driver should monitor traffic conditions and brake as needed to prevent collisions. See Owner's Manual for safety information. ⁴⁰Intelligent Lane Intervention only operates when lane markings or road edge (if equipped) are detectable. See Owner's Manual for safety information. ⁴¹Intelligent Blind Spot Intervention® cannot prevent all collisions and may not detect every object or warn in all situations. Driver should always turn and look before changing lanes. See Owner's Manual for safety information. ⁴²Rear Cross Traffic Alert may not detect all vehicles. See Owner's Manual for safety information. ⁴³Rear Automatic Braking cannot prevent all collisions and may not provide warning or braking in all conditions. Driver should always turn and check surroundings before driving and brake as needed to prevent collisions. See Owner's Manual for safety information. ⁴⁴Sonar System may not detect every object. Driver should always check surroundings before driving. See Owner's Manual for safety information. ⁴⁵Intelligent Driver Alertness cannot provide a warning in every situation. See Owner's Manual for safety information. ⁴⁶Traffic Sign Recognition may not detect and read all traffic signs in all conditions. Driver should monitor all traffic signs and obey all traffic laws. See Owner's Manual for details. ⁴⁷Vehicle Dynamic Control cannot prevent collisions due to abrupt steering, carelessness, or dangerous driving techniques. It should remain on when driving, except when freeing the vehicle from mud or snow. See Owner's Manual for safety information. ⁴⁸Available only on Nissan vehicles with AT&T-compatible in-vehicle Wi-Fi hotspot capability. Subject to third party service availability. Trial activation required. Trial ends when all data is used or period ends, whichever comes first. Use features only when safe and legal. Data charges may apply. **Subject to AT&T terms and conditions and its privacy policy, and are not within Nissan's control. Visit www.att.com/csa for complete terms and conditions.** Trial subscription is subject to change or early termination at any time without notice. Trademarks and trade names are those of their respective owners. ⁴⁹Air bags are only a supplemental restraint system. Always wear your seat belt. Rear-facing child restraints should not be placed in the front-passenger's seat. All children 12 and under should ride in the rear seat properly secured in child restraints, booster seats, or seat belts according to their size. Air bags will only inflate in certain accidents. See Owner's Manual for safety information. ⁵⁰Up to 1,500 lbs. maximum towing for 2025 ARIYA Dual Motor e-4ORCE AWD. Towing capacity varies by configuration. See Nissan Towing Guide and Owner's Manual for additional information. Cargo and load capacity limited by weight and distribution. Always secure cargo. ⁵¹Roadside assistance coverage period varies by model year and model. Includes Trip Interruption benefits. For complete information concerning warranty coverage, conditions and exclusions, see your Nissan dealer and read your vehicle's Warranty Information Booklet. Amazon, Alexa, Echo, and all related marks are trademarks of Amazon.com, Inc. or its affiliates. Android and Android Auto are trademarks of Google LLC. Compatible Android phone and compatible active data plan required. Apple CarPlay® and Apple Watch® are registered trademarks of Apple, Inc. Bose® is a registered trademark of The Bose Corporation. HomeLink® is a registered trademark of Gentex Corporation. SiriusXM is a registered trademark of Sirius XM Radio Inc. Yakima® is a registered trademark of Yakima Products, Inc. This brochure is intended for general descriptive and informational purposes only. It is subject to change and does not constitute an offer, representation or warranty (express or implied) by Nissan North America, Inc. Interested parties should confirm the accuracy of any information in this brochure as it relates to a vehicle directly with Nissan North America, Inc., before relying on it to make a purchase decision. Nissan North America, Inc., reserves the right to make changes, at any time, without prior notice, in prices, colors, materials, equipment, specifications, and models and to discontinue models or equipment. Due to continuous product development and other pre- and post-production factors, actual vehicle, materials and specifications may vary from this brochure. Some vehicles shown with optional equipment. See the actual vehicle for complete accuracy. Availability and delivery times for particular models or equipment may vary. Specifications, options and accessories may differ in Hawaii, U.S. territories and other countries. For additional information on availability, options or accessories, see your Nissan dealer or contact Nissan North America, Inc. At **NissanUSA.com**, you'll find virtual product demonstrations, a way to "build your own Nissan," a dealer locator, and more information about key Nissan support services. Or if you'd prefer, call **1-800-NISSAN-3** for answers to specific questions about ARIYA or any other Nissan vehicle. The Nissan names, logos, product names, feature names, and slogans are trademarks owned by or licensed to Nissan Motor Co. Ltd. and/or its North American subsidiaries. Other trademarks and trade names are those of their respective owners. Always wear your seat belt, and please drive responsibly. ©2024 Nissan North America, Inc. All rights reserved. 25122283-N-9/24-60K-KSL2025 PLATINUM+ Dual Motor e-4ORCE All-Wheel Drive model shown.



Your electric future awaits

ARIYA is an exquisite, future-forward silhouette on every road — and inside, a spacious lounge with haptic feedback controls, seamless dual-screen displays, and modular design cues. And beneath every elegant touch is thrilling innovation: available Dual Motor e-4ORCE[®] AWD, ProPILOT Assist 2.0, and driver assist technologies provide all the power and confidence you'd expect from a revolutionary Nissan EV crossover.^{1, 2, 3, 4}

The future is all around you

Inside ARIYA is a spacious experience worthy of the new electric age. Without the limitations of an internal combustion engine, ARIYA redefines our relationship with the space around us. From crafted interior details inspired by old-world Japanese design to a spectrum of advanced innovations — this is the electric future you've been waiting for.

Lounge-like seating up to 5 | Power-sliding center console⁵ | Available Nappa leather-appointed cabin





Technology for the senses

Chances are, you've never experienced anything quite like ARIYA. A combination of refined craftsmanship, groundbreaking technology, and multi-sensory details makes every drive extraordinary. Interactive ANDON floor and door lighting elevate the senses, welcoming you into an immersive cabin experience. And with a stunning 12.3" dual widescreen Integrated Display Interface, next-generation voice control, and seamless smartphone connectivity, the road to your electric future is officially open.^{1, 6, 7}

12.3" Integrated Display Interface^{1, 7} | Advanced Voice Recognition^{6, 7} | Haptic Touch Controls | Wireless Charging⁸ | Wireless Smartphone Integration⁷ | Alexa-Built-in^{7, 9} | Over-the-Air Firmware Updates¹⁰



Even the details innovate

ARIYA's interior doesn't just invite serenity — it invites a closer look. Instead of conventional buttons, you'll find illuminated haptic controls built into the wood-toned surface of your dashboard. Even the textures of your climate console and driving mode controls are engineered to thrill.

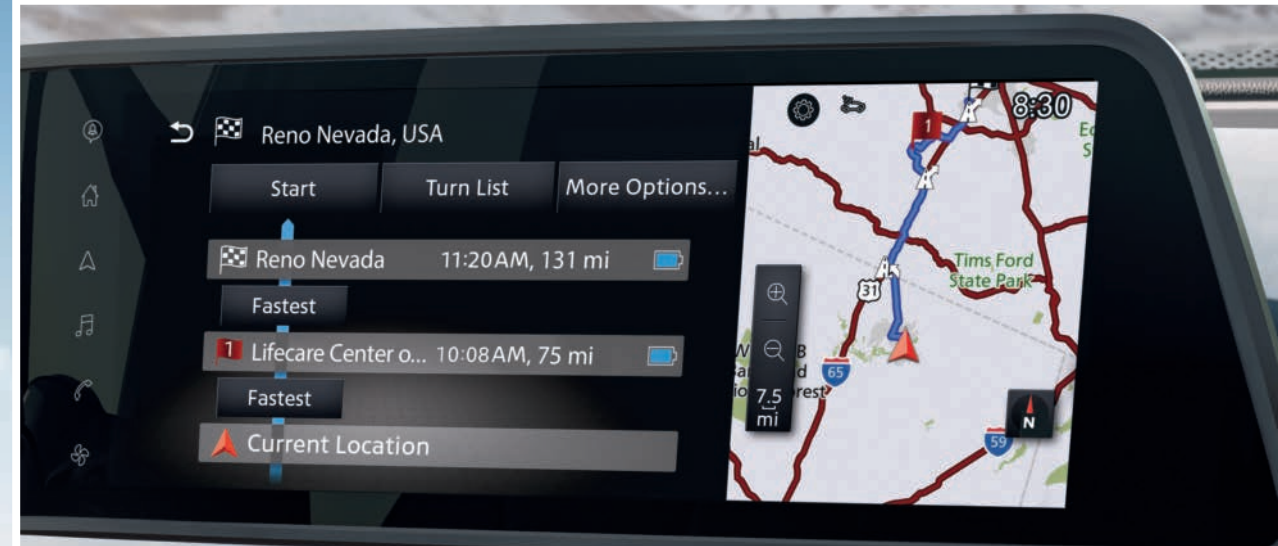


Charge ahead with confidence

Infused with Nissan's long history of EV innovation, ARIYA is more than an electric crossover. With advances like active thermal management to optimize performance in both hot and cold climates, ARIYA's fast-charging lithium-ion battery system takes technology to the next level.^{11, 12} Choose between standard or extended-range capacity — and front-wheel drive or available Dual Motor e-4ORCE® All-Wheel Drive.^{2, 11} Just charge up and go: the road is yours.



Nissan ARIYA PLATINUM+ Dual Motor e-4ORCE® AWD shown in Two-tone Deep Ocean Blue Pearl / Black Diamond Pearl¹⁴ with Accessory Load Carriers — Crossbars.¹⁵



Charge at home With a dedicated wall charger, you can plug into the easy life and wave goodbye to the gas pump.^{11, 16}

Charge smart Schedule your home charging from your compatible smartphone and choose times when electricity rates may be lower. That means you can set charging to start while you sleep, and then wake up to an ARIYA 100% ready to go.^{7, 11, 16, 17}

Charge on the go An ever-expanding public charging network, including fast charge stations, lets you commute with confidence.^{11, 12}

Intelligent Route Planner This digital tool can help make your journey seamless: sync the climate control system with your departure time and calculate the route to your destination while locating fast chargers along the way. This is next-level road-tripping.^{6, 7, 12, 17, 18}

SiriusXM® with 360L Transform your ride with the most extensive and personalized radio experience on the road. Advanced in-car technology makes finding your favorite SiriusXM® channels, shows, and exclusive content easier than ever before.^{5, 19}

All-Wheel Drive — evolved

ARIYA's available Dual Motor e-4ORCE® All-Wheel Drive powertrain offers more than just awe-inspiring thrust and thrills. It combines balanced, smooth motion with positive traction for elevated grip and uplifted confidence you can feel year-round.²

Press the accelerator, and Dual Motor e-4ORCE All-Wheel Drive responds with authority, propelling ARIYA up to speed with remarkable force and poise. Dual Motor e-4ORCE All-Wheel Drive precisely meters out power to each of its wheels individually, so you can navigate slippery roads with more confidence.^{2, 6}

e-4ORCE



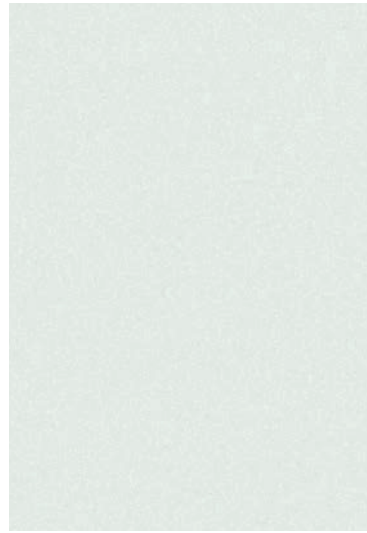
With available ProPILOT Assist 2.0, driving doesn't always have to be so hands-on

ProPILOT Assist 2.0 Feel the full power of ProPILOT Assist 2.0 as it helps out with freeway lane changes and can provide hands-off, foot-off driving assistance through stop-and-go freeway traffic.^{3, 5}

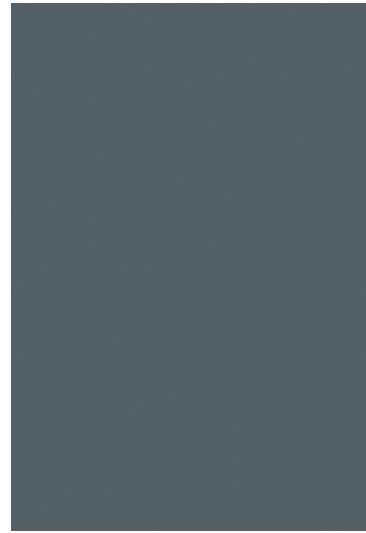
ProPILOT Park Tight parking spot? Push the ProPILOT Park button, and glide, hands-off, right into the spot — whether it's back-in or parallel.^{5, 20}

CHOOSE YOUR COLOR

ARIYA Trim Legend
 ENG = ENGAGE
 EVO = EVOLVE+
 PLT = PLATINUM+



Everest White Pearl TriCoat¹⁴

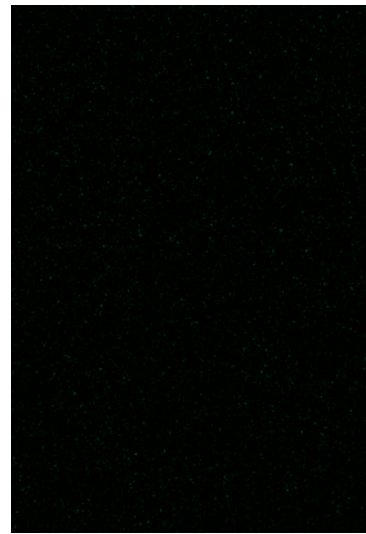


Boulder Gray Pearl



Gun Metallic

	ENG	EVO	PLT	ENG	EVO	PLT	ENG	EVO	PLT
Charcoal Leatherette	■	■		■	■		■	■	
Light Gray Leatherette	■	■		■	■			■	
Blue Gray Nappa Leather appointments			■			■			■



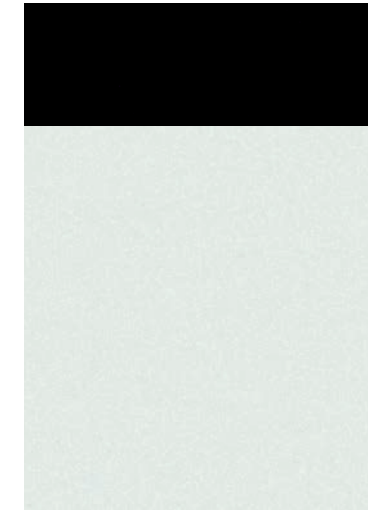
Northern Lights Metallic¹⁴



Black Diamond Pearl

■ Standard
 Nissan has taken care to ensure that the color swatches presented here are the closest possible representations of actual vehicle colors. Swatches may vary slightly due to the printing process and whether viewed in daylight, fluorescent or incandescent light. Please see the actual colors at your dealer.

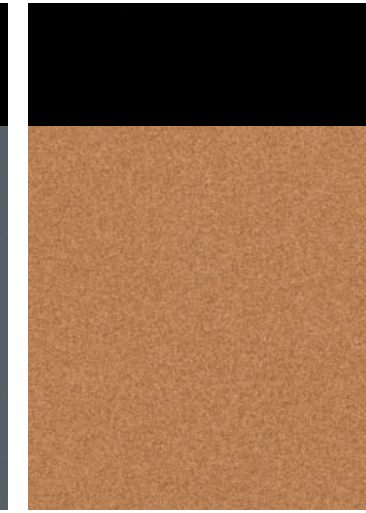
	ENG	EVO	PLT	ENG	EVO	PLT
Charcoal Leatherette		■		■	■	
Light Gray Leatherette		■		■	■	
Blue Gray Nappa Leather appointments						■



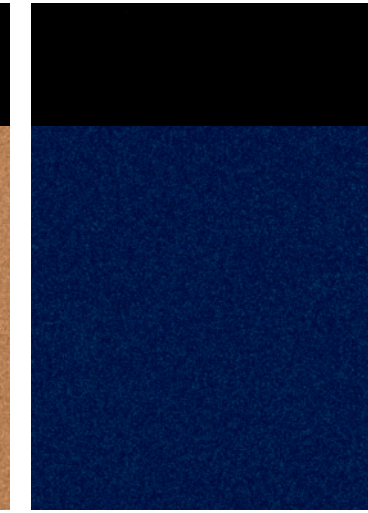
Two-tone Everest White Pearl TriCoat/Black Diamond Pearl¹⁴



Two-tone Boulder Gray Pearl/Black Diamond Pearl¹⁴



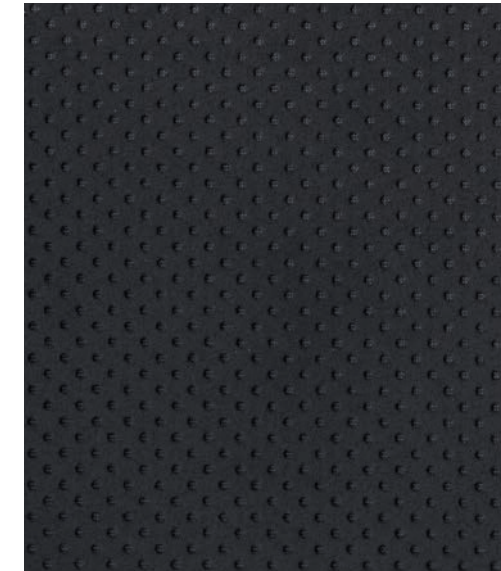
Two-tone Sunrise Copper Pearl/Black Diamond Pearl¹⁴



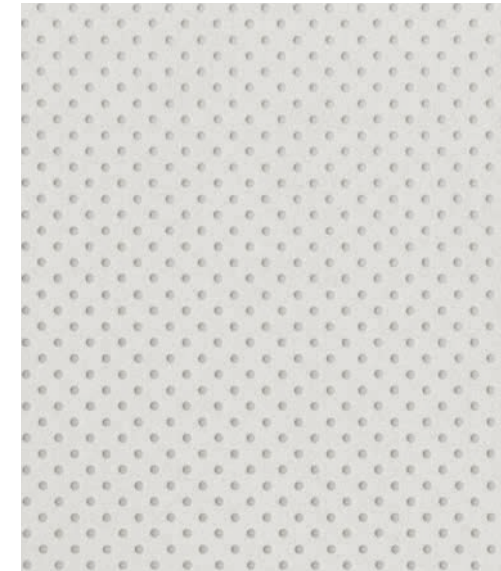
Two-tone Deep Ocean Blue Pearl/Black Diamond Pearl¹⁴

	ENG	EVO	PLT	ENG	EVO	PLT	ENG	EVO	PLT	ENG	EVO	PLT
Charcoal Leatherette	■	■		■	■					■	■	
Light Gray Leatherette	■	■			■					■	■	
Blue Gray Nappa Leather appointments			■			■			■			■

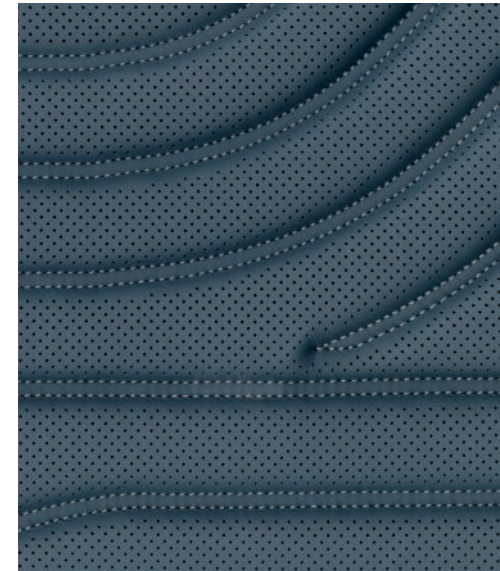
CHOOSE YOUR INTERIOR



Charcoal Leatherette
 ENGAGE | EVOLVE+



Light Gray Leatherette
 ENGAGE | EVOLVE+



Blue Gray Nappa Leather appointments
 PLATINUM+

NISSAN ARIYA ACCESSORIES

Build the “you” edition

Every Genuine Nissan Accessory is custom-fit, custom-designed, and durability-tested. Each one is backed by Nissan’s 3-year/36,000-mile (whichever occurs first) limited warranty (if installed by the dealer at the time of new vehicle purchase) and can be financed when installed by the dealer at time of new vehicle purchase.²¹ Affiliated Yakima® accessories are not warranted by Nissan. Refer to product manufacturer for warranty details. Nissan Limited Warranty does not cover damages or failures to the vehicle caused by improper installation or alterations of any Nissan-affiliated accessory or component. Contact your dealer for details.²²



For more information and to shop online for ARIYA Genuine Nissan Accessories, scan the code.



Left: **Nissan ARIYA PLATINUM+ Dual Motor e-4ORCE® All-Wheel Drive** shown in Two-tone Sunrise Copper Pearl/Black Diamond Pearl¹⁴ with 19" Gloss Black Aluminum-Alloy Wheels, Load Carriers — Crossbars,¹⁵ Affiliated: Yakima® ForkLift — Fork Mount Bike Rack,^{15, 22} Side-Window Deflectors, Clear Hood and Charging Port Protector Set, Exterior Ground Lighting w/ Logo and Rear Illumination, LED Fog Lights (standard on PLATINUM+ Dual Motor e-4ORCE All-Wheel Drive), and Splash Guards (4-piece set).

Right: **Nissan ARIYA PLATINUM+ Dual Motor e-4ORCE® All-Wheel Drive** shown in Two-tone Everest White Pearl TriCoat/Black Diamond Pearl¹⁴ with 19" Gloss Black Aluminum-Alloy Wheels, 19" Satin Chrome Wheel Insert Kit, Load Carriers — Crossbars,¹⁵ Affiliated: Yakima® LoadWarrior — Cargo Basket,^{15, 22} Side-Window Deflectors, Clear Rear Bumper Protector, Exterior Ground Lighting w/ Logo and Rear Illumination, Tow Hitch Receiver Kit, Class I,²³ Trailer Tow Harness (4-pin),²³ Affiliated: Yakima® RidgeBack 4 — Hitch Mount Bike Rack,^{15, 22} Affiliated: Yakima® HitchSki — Hitch Mount Ski Adapter,^{15, 22} and Splash Guards (4-piece set).

CHOOSE YOUR ACCESSORIES

A. Virtual Key²⁴

Use your compatible smartphone or Apple Watch® to lock/unlock and start your ARIYA. You can even share this access with up to 7 others.

B. Dual Camera Drive Recorder^{25, 26}

Catch what’s happening outside and inside your ARIYA.

C. Retractable Pet Divider

Give your 4-legged friends their own space and help keep them secure.

D. All-Season Floor Mats — High Wall Liners (3-piece set)

Protect the interior from rain, snow, and mud.

E. Front Console Storage Bin

Conveniently secure your loose items within easy reach.

F. Illuminated Kick Plates²⁷ and Interior Accent Lighting (sold separately)

Enliven your atmosphere with a glowing reception.

G. Interior Door Scuff Protection

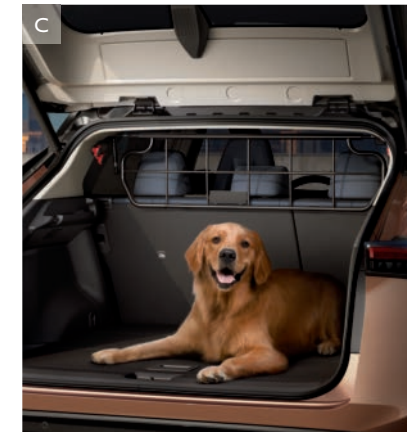
Help shield ARIYA where it counts for protection from scuffs and scratches.

H. Illuminated Cargo Scuff Plates

Armor and illuminate ARIYA's cargo area.

Additional Accessories:

- Carpeted Floor Mats (2-piece set)
- Trash Bin
- Hatch Tent
- Removable Tote Cargo Organizer
- Affiliated: Yakima® SkyBox 16 — Roof Cargo Box^{15, 22}
- Frameless EC Mirror w/ HomeLink®
- Security Impact Sensor
- Wheel Locks
- Pet Ramp
- Pet Carrier
- Dog Harness
- And More



CHOOSE YOUR TRIM

Choose the ARIYA that fits your world

Whether you crave driving excitement, adventure-worthy capability, impressive range, or something in between, there's an ARIYA for you.¹⁷



	ENGAGE	ENGAGE Dual Motor AWD	ENGAGE+ Dual Motor AWD	EVOLVE+	EVOLVE+ Dual Motor AWD	PLATINUM+ Dual Motor AWD
Mile Range ¹⁷	Up to 216 miles ¹⁷	Up to 205 miles ¹⁷	Up to 272 miles ¹⁷	Up to 289 miles ¹⁷	Up to 272 miles ¹⁷	Up to 267 miles ¹⁷
Drivetrain	FWD	AWD	AWD	FWD	AWD	AWD
Battery ¹¹	63 kWh	63 kWh	87 kWh	87 kWh	87 kWh	87 kWh
Motor(s)	160 kW	250 kW	290 kW	178 kW	290 kW	290 kW
HP ²⁸ Torque	214 221 lb-ft	335 413 lb-ft	389 442 lb-ft	238 221 lb-ft	389 442 lb-ft	389 442 lb-ft
0-60 MPH (est.) ²⁹	7.1 seconds	5.1 seconds	4.8 seconds	7.2 seconds	4.8 seconds	4.8 seconds
Charge Time (est.) ¹¹	35 min (80%)	35 min (80%)	40 min (80%)	40 min (80%)	40 min (80%)	40 min (80%)
Trim Highlights	ENGAGE models offer different batteries, ¹¹ ranges, ¹⁷ and choice of Front-Wheel Drive or Dual Motor e-4ORCE [®] All-Wheel Drive. ²			The EVOLVE+ models offer a choice of Front-Wheel Drive and Dual Motor e-4ORCE All-Wheel Drive. ²		The PLATINUM+ is the ARIYA flagship. It is Dual Motor e-4ORCE All-Wheel Drive. ²
Key Features	Key features include: <ul style="list-style-type: none"> • ProPILOT Assist with Navi-link³⁰ • Standard Safety Shield[®] 360³¹ • ANDON interior lighting • Wireless Apple CarPlay[®] integration⁷ • Android Auto™ compatibility⁷ • Dual 12.3" displays^{1,7} • Head-Up Display³² • 8-way power driver's seat • Memory system — driver's seat • Power-sliding center console • Leatherette-appointed seats • Heated front and rear outboard seats • Heated steering wheel • Wireless charger⁸ 			Both EVOLVE+ models include ENGAGE equipment, plus: <ul style="list-style-type: none"> • Intelligent Around View[®] Monitor³³ • Intelligent Rear View Mirror³⁴ • Panoramic Moonroof • Power liftgate • 8-way power front-passenger seat • Rain-sensing windshield wipers • HomeLink[®] Universal Transceiver 		Includes EVOLVE+ equipment, plus: <ul style="list-style-type: none"> • ProPILOT Assist 2.0³ • ProPILOT Park²⁰ • Multi-color contextual line illumination • Motion Activated Liftgate • Nappa leather-appointed seats • Climate-controlled front seats • Bose Premium Audio System • LED fog lights

SPECIFICATIONS

Mechanical	ENG	EVO	PLT
160 kW AC synchronous electric motor	<input checked="" type="checkbox"/>	<input type="checkbox"/>	<input type="checkbox"/>
178 kW AC synchronous electric motor	<input type="checkbox"/>	<input checked="" type="checkbox"/>	<input type="checkbox"/>
250 kW dual AC synchronous electric motors	<input type="checkbox"/>	<input type="checkbox"/>	<input type="checkbox"/>
290 kW dual AC synchronous electric motors	<input type="checkbox"/>	<input type="checkbox"/>	<input checked="" type="checkbox"/>
Horsepower — 214 hp ²⁸	<input checked="" type="checkbox"/>	<input type="checkbox"/>	<input type="checkbox"/>
Horsepower — 238 hp ²⁸	<input type="checkbox"/>	<input checked="" type="checkbox"/>	<input type="checkbox"/>
Horsepower — 335 hp ²⁸	<input type="checkbox"/>	<input type="checkbox"/>	<input checked="" type="checkbox"/>
Horsepower — 389 hp ²⁸	<input type="checkbox"/>	<input type="checkbox"/>	<input checked="" type="checkbox"/>
Torque — 221 lb-ft	<input checked="" type="checkbox"/>	<input checked="" type="checkbox"/>	<input type="checkbox"/>
Torque — 413 lb-ft	<input type="checkbox"/>	<input type="checkbox"/>	<input checked="" type="checkbox"/>
Torque — 442 lb-ft	<input type="checkbox"/>	<input type="checkbox"/>	<input checked="" type="checkbox"/>
63 kWh lithium-ion battery	<input checked="" type="checkbox"/>	<input type="checkbox"/>	<input type="checkbox"/>
87 kWh lithium-ion battery	<input type="checkbox"/>	<input checked="" type="checkbox"/>	<input checked="" type="checkbox"/>
Battery heater	<input checked="" type="checkbox"/>	<input checked="" type="checkbox"/>	<input checked="" type="checkbox"/>
7.2 kW onboard charger	<input checked="" type="checkbox"/>	<input checked="" type="checkbox"/>	<input checked="" type="checkbox"/>
Quick Charge Port — 130 kW ¹¹	<input checked="" type="checkbox"/>	<input checked="" type="checkbox"/>	<input checked="" type="checkbox"/>
Portable charge cable (120-V / 240-V) ^{11, 16}	<input checked="" type="checkbox"/>	<input checked="" type="checkbox"/>	<input checked="" type="checkbox"/>

Drivetrain			
Front-wheel Drive (FWD)	<input checked="" type="checkbox"/>	<input checked="" type="checkbox"/>	<input type="checkbox"/>
Dual Motor e-4ORCE® All-Wheel Drive ²	<input type="checkbox"/>	<input type="checkbox"/>	<input checked="" type="checkbox"/>
Eco and Sport Modes	<input checked="" type="checkbox"/>	<input checked="" type="checkbox"/>	<input checked="" type="checkbox"/>
Snow Mode (AWD)	<input type="checkbox"/>	<input type="checkbox"/>	<input checked="" type="checkbox"/>
Regenerative braking system with e-Step Mode ³⁵	<input checked="" type="checkbox"/>	<input checked="" type="checkbox"/>	<input checked="" type="checkbox"/>

Brakes			
Front and rear vented disc brakes	<input checked="" type="checkbox"/>	<input checked="" type="checkbox"/>	<input checked="" type="checkbox"/>
4-wheel Anti-lock Braking System (ABS)	<input checked="" type="checkbox"/>	<input checked="" type="checkbox"/>	<input checked="" type="checkbox"/>
Electronic Brake force Distribution (EBD)	<input checked="" type="checkbox"/>	<input checked="" type="checkbox"/>	<input checked="" type="checkbox"/>
Brake Assist ³⁶	<input checked="" type="checkbox"/>	<input checked="" type="checkbox"/>	<input checked="" type="checkbox"/>
Electronic parking brake	<input checked="" type="checkbox"/>	<input checked="" type="checkbox"/>	<input checked="" type="checkbox"/>

Suspension/Steering			
Independent strut front suspension	<input checked="" type="checkbox"/>	<input checked="" type="checkbox"/>	<input checked="" type="checkbox"/>
Independent multi-link rear suspension	<input checked="" type="checkbox"/>	<input checked="" type="checkbox"/>	<input checked="" type="checkbox"/>
Front and rear stabilizer bars	<input checked="" type="checkbox"/>	<input checked="" type="checkbox"/>	<input checked="" type="checkbox"/>
Vehicle-speed-sensitive electric power steering	<input checked="" type="checkbox"/>	<input checked="" type="checkbox"/>	<input checked="" type="checkbox"/>

Driver Assistance Technologies			
Intelligent Cruise Control ³⁷	<input checked="" type="checkbox"/>	<input checked="" type="checkbox"/>	<input checked="" type="checkbox"/>
ProPILOT Assist with Navi-link ³⁰	<input checked="" type="checkbox"/>	<input checked="" type="checkbox"/>	<input type="checkbox"/>
ProPILOT Assist 2.0 ³	<input type="checkbox"/>	<input type="checkbox"/>	<input checked="" type="checkbox"/>
ProPILOT Park ²⁰	<input type="checkbox"/>	<input type="checkbox"/>	<input checked="" type="checkbox"/>
Intelligent Forward Collision Warning ³⁸	<input checked="" type="checkbox"/>	<input checked="" type="checkbox"/>	<input checked="" type="checkbox"/>
Automatic Emergency Braking with Pedestrian Detection ³⁹	<input checked="" type="checkbox"/>	<input checked="" type="checkbox"/>	<input checked="" type="checkbox"/>
Intelligent Lane Intervention ⁴⁰	<input checked="" type="checkbox"/>	<input checked="" type="checkbox"/>	<input checked="" type="checkbox"/>
Intelligent Blind Spot Intervention® ⁴¹	<input checked="" type="checkbox"/>	<input checked="" type="checkbox"/>	<input checked="" type="checkbox"/>
Rear Cross Traffic Alert ⁴²	<input checked="" type="checkbox"/>	<input checked="" type="checkbox"/>	<input checked="" type="checkbox"/>
Rear Automatic Braking ⁴³	<input checked="" type="checkbox"/>	<input checked="" type="checkbox"/>	<input checked="" type="checkbox"/>
Intelligent Around View® Monitor ³³	<input type="checkbox"/>	<input checked="" type="checkbox"/>	<input checked="" type="checkbox"/>
Intelligent Rear View Mirror ³⁴	<input type="checkbox"/>	<input checked="" type="checkbox"/>	<input checked="" type="checkbox"/>
Front and Rear Sonar System ⁴⁴	<input checked="" type="checkbox"/>	<input checked="" type="checkbox"/>	<input checked="" type="checkbox"/>
High Beam Assist	<input checked="" type="checkbox"/>	<input checked="" type="checkbox"/>	<input checked="" type="checkbox"/>

Driver Assistance Technologies (continued)	ENG	EVO	PLT
Intelligent Driver Alertness ⁴⁵	<input checked="" type="checkbox"/>	<input checked="" type="checkbox"/>	<input checked="" type="checkbox"/>
Traffic Sign Recognition ⁴⁶	<input checked="" type="checkbox"/>	<input checked="" type="checkbox"/>	<input checked="" type="checkbox"/>
Hill Start Assist	<input checked="" type="checkbox"/>	<input checked="" type="checkbox"/>	<input checked="" type="checkbox"/>
Vehicle Dynamic Control (VDC) with Traction Control System (TCS) ⁴⁷	<input checked="" type="checkbox"/>	<input checked="" type="checkbox"/>	<input checked="" type="checkbox"/>

Wheels/Tires			
19" Aluminum-alloy wheels with aero covers	<input checked="" type="checkbox"/>	<input checked="" type="checkbox"/>	<input checked="" type="checkbox"/>
20" Aluminum-alloy wheels	<input type="checkbox"/>	<input type="checkbox"/>	<input type="checkbox"/>
P235/55R19 All-season tires	<input checked="" type="checkbox"/>	<input checked="" type="checkbox"/>	<input checked="" type="checkbox"/>
P255/45R20 All-season tires	<input type="checkbox"/>	<input type="checkbox"/>	<input type="checkbox"/>

Exterior Features			
LED headlights with LED signature Daytime Running Lights	<input checked="" type="checkbox"/>	<input checked="" type="checkbox"/>	<input checked="" type="checkbox"/>
Intelligent Auto Headlights	<input checked="" type="checkbox"/>	<input checked="" type="checkbox"/>	<input checked="" type="checkbox"/>
Dual power-folding heated outside mirrors	<input checked="" type="checkbox"/>	<input checked="" type="checkbox"/>	<input checked="" type="checkbox"/>
Outside mirrors with integrated LED turn signal indicators	<input type="checkbox"/>	<input type="checkbox"/>	<input checked="" type="checkbox"/>
Charge port with light and lock	<input checked="" type="checkbox"/>	<input checked="" type="checkbox"/>	<input checked="" type="checkbox"/>
Illuminated front badge	<input type="checkbox"/>	<input checked="" type="checkbox"/>	<input checked="" type="checkbox"/>
Panoramic Moonroof	<input type="checkbox"/>	<input checked="" type="checkbox"/>	<input checked="" type="checkbox"/>
Power liftgate	<input type="checkbox"/>	<input checked="" type="checkbox"/>	<input type="checkbox"/>
Motion Activated Liftgate	<input type="checkbox"/>	<input type="checkbox"/>	<input checked="" type="checkbox"/>
Satin Chrome exterior trim	<input type="checkbox"/>	<input type="checkbox"/>	<input checked="" type="checkbox"/>
Dark Satin Chrome exterior trim (AWD only)	<input type="checkbox"/>	<input type="checkbox"/>	<input checked="" type="checkbox"/>

Comfort/Convenience			
Dual Zone Automatic Temperature Control	<input checked="" type="checkbox"/>	<input checked="" type="checkbox"/>	<input checked="" type="checkbox"/>
Nissan Intelligent Key® with Push Button Start and four-door request switch	<input checked="" type="checkbox"/>	<input checked="" type="checkbox"/>	<input checked="" type="checkbox"/>
Power tilt and telescoping steering column	<input type="checkbox"/>	<input type="checkbox"/>	<input checked="" type="checkbox"/>
HomeLink® Universal Transceiver	<input type="checkbox"/>	<input checked="" type="checkbox"/>	<input checked="" type="checkbox"/>
Outside mirrors with reverse tilt-down feature	<input type="checkbox"/>	<input type="checkbox"/>	<input checked="" type="checkbox"/>
ANDON interior lighting	<input checked="" type="checkbox"/>	<input checked="" type="checkbox"/>	<input checked="" type="checkbox"/>
Multi-color contextual line illumination	<input type="checkbox"/>	<input type="checkbox"/>	<input checked="" type="checkbox"/>
Rain-sensing windshield wipers	<input type="checkbox"/>	<input checked="" type="checkbox"/>	<input checked="" type="checkbox"/>
Power-sliding center console	<input checked="" type="checkbox"/>	<input checked="" type="checkbox"/>	<input checked="" type="checkbox"/>
Six cargo tie-down hooks	<input checked="" type="checkbox"/>	<input checked="" type="checkbox"/>	<input checked="" type="checkbox"/>
Divide-N-Hide® Cargo System (FWD only) ¹⁵	<input checked="" type="checkbox"/>	<input checked="" type="checkbox"/>	<input type="checkbox"/>

Seating/Appointments			
8-way power driver’s seat, with 4-way power lumbar support	<input checked="" type="checkbox"/>	<input checked="" type="checkbox"/>	<input checked="" type="checkbox"/>
8-way power front-passenger’s seat	<input type="checkbox"/>	<input type="checkbox"/>	<input checked="" type="checkbox"/>
Memory System — driver’s seat	<input type="checkbox"/>	<input checked="" type="checkbox"/>	<input type="checkbox"/>
Memory System — driver’s and passenger’s seats, steering wheel, and outside mirrors	<input type="checkbox"/>	<input type="checkbox"/>	<input checked="" type="checkbox"/>
Leatherette-appointed seats	<input checked="" type="checkbox"/>	<input checked="" type="checkbox"/>	<input type="checkbox"/>
Nappa leather-appointed seats	<input type="checkbox"/>	<input type="checkbox"/>	<input checked="" type="checkbox"/>
Heated leather-wrapped steering wheel	<input checked="" type="checkbox"/>	<input checked="" type="checkbox"/>	<input checked="" type="checkbox"/>
Heated front seats	<input checked="" type="checkbox"/>	<input checked="" type="checkbox"/>	<input type="checkbox"/>
Climate-controlled front seats (heated and cooled)	<input type="checkbox"/>	<input type="checkbox"/>	<input checked="" type="checkbox"/>
Heated outboard rear seats	<input checked="" type="checkbox"/>	<input checked="" type="checkbox"/>	<input checked="" type="checkbox"/>

Infotainment	ENG	EVO	PLT
12.3" Digital dashboard with fully digital gauges ¹	<input checked="" type="checkbox"/>	<input checked="" type="checkbox"/>	<input checked="" type="checkbox"/>
NissanConnect® 12.3" display with multi-touch control ⁷	<input checked="" type="checkbox"/>	<input checked="" type="checkbox"/>	<input checked="" type="checkbox"/>
Nissan Door to Door Navigation with Premium Traffic ⁶	<input checked="" type="checkbox"/>	<input checked="" type="checkbox"/>	<input checked="" type="checkbox"/>
NissanConnect® Services powered by SiriusXM® with trial access to 5-year Select and 3-year Premium packages ⁷	<input checked="" type="checkbox"/>	<input checked="" type="checkbox"/>	<input checked="" type="checkbox"/>
Head-Up Display ³²	<input type="checkbox"/>	<input checked="" type="checkbox"/>	<input checked="" type="checkbox"/>
Voice Recognition ⁶	<input checked="" type="checkbox"/>	<input checked="" type="checkbox"/>	<input checked="" type="checkbox"/>
Hello Nissan ⁷	<input checked="" type="checkbox"/>	<input checked="" type="checkbox"/>	<input checked="" type="checkbox"/>
Alexa Built-in ^{7,9}	<input checked="" type="checkbox"/>	<input checked="" type="checkbox"/>	<input checked="" type="checkbox"/>
Wireless Apple CarPlay® integration ⁷	<input checked="" type="checkbox"/>	<input checked="" type="checkbox"/>	<input checked="" type="checkbox"/>
Android Auto™ compatibility ⁷	<input checked="" type="checkbox"/>	<input checked="" type="checkbox"/>	<input checked="" type="checkbox"/>
SiriusXM® Traffic and Travel Link with 3-month trial access ⁷	<input type="checkbox"/>	<input checked="" type="checkbox"/>	<input checked="" type="checkbox"/>
Wi-Fi Hotspot ^{7, 48}	<input checked="" type="checkbox"/>	<input checked="" type="checkbox"/>	<input checked="" type="checkbox"/>
Firmware Over-the-Air Updates ¹⁰	<input checked="" type="checkbox"/>	<input checked="" type="checkbox"/>	<input checked="" type="checkbox"/>
Bose Premium Audio System with 10 speakers, including dual-driver woofer	<input type="checkbox"/>	<input type="checkbox"/>	<input checked="" type="checkbox"/>
One USB-A ports and three USB-C ports ⁸	<input checked="" type="checkbox"/>	<input checked="" type="checkbox"/>	<input checked="" type="checkbox"/>
Wireless charger ⁸	<input checked="" type="checkbox"/>	<input checked="" type="checkbox"/>	<input checked="" type="checkbox"/>
SiriusXM® with 360L and 3-month subscription included ¹⁹	<input checked="" type="checkbox"/>	<input checked="" type="checkbox"/>	<input checked="" type="checkbox"/>

Safety			
Nissan Advanced Air Bag System with dual-stage supplemental front air bags with seat-belt and occupant-classification sensors ⁴⁹	<input checked="" type="checkbox"/>	<input checked="" type="checkbox"/>	<input checked="" type="checkbox"/>
Seat-mounted side-impact supplemental air bags for front- and rear-seat outboard occupants ⁴⁹	<input checked="" type="checkbox"/>	<input checked="" type="checkbox"/>	<input checked="" type="checkbox"/>
Driver and front-passenger supplemental knee air bags ⁴⁹	<input checked="" type="checkbox"/>	<input checked="" type="checkbox"/>	<input checked="" type="checkbox"/>
Roof-mounted curtain supplemental air bags with rollover sensor for side-impact head protection for front- and rear-seat outboard occupants ⁴⁹	<input checked="" type="checkbox"/>	<input checked="" type="checkbox"/>	<input checked="" type="checkbox"/>
Driver seat-mounted front-center supplemental air bag ⁴⁹	<input type="checkbox"/>	<input type="checkbox"/>	<input checked="" type="checkbox"/>
3-point ALR/ELR passenger seat belt system (ELR for driver)	<input checked="" type="checkbox"/>	<input checked="" type="checkbox"/>	<input checked="" type="checkbox"/>
Front and rear-outboard seat belts with pretensioners and load limiters	<input checked="" type="checkbox"/>	<input checked="" type="checkbox"/>	<input checked="" type="checkbox"/>
LATCH System (Lower Anchors and Tethers for Children)	<input checked="" type="checkbox"/>	<input checked="" type="checkbox"/>	<input checked="" type="checkbox"/>

2025 Fuel Economy MPGe ¹⁷	ENG	EVO	PLT
FWD	109/94/101	105/91/98	-
AWD	101/89/95	97/86/92	93/87/90
	97/86/92		89/84/87
	(ENGAGE+)		(w/ 20" wheels)

^[1] Information displayed is dependent on how vehicle is equipped. Driving is serious business and requires your full attention. If you have to use the feature while driving, exercise extreme caution at all times so full attention may be given to vehicle operation.

^[2] Dual Motor e-4ORCE AWD cannot prevent collisions or provide enhanced traction in all conditions. Always monitor traffic and weather conditions.

^[3] ProPILOT Assist 2.0 can't prevent collisions. Driver at all times responsible to maintain safety by monitoring traffic, controlling vehicle, and if needed steer, brake or accelerate. System works only when lane markings detected and does not function in all weather, traffic and road conditions. See Owner's Manual for safety information. NissanConnect Services subscription required. See NissanUSA.com/connect/legal.

^[4] Availability of features vary by vehicle model year, model, trim level, packaging, and options. Please see Owner's Manual for important feature information.

^[5] Feature availability varies by vehicle model year, model, trim level, packaging and options.

^[6] Never program while driving. GPS mapping may not be detailed in all areas or reflect current road status.

^[7] Feature availability is dependent on vehicle model year, model, trim level, packaging and options. See NissanUSA.com/connect/packages.html for details.

^[8] Driving is serious business and requires your full attention. If you have to use the connected device while driving, exercise extreme caution at all times so full attention may be given to vehicle operation.

^[9] Feature availability varies by vehicle model year, model, trim level, packaging and options. Connectivity service may be required. Alexa is Amazon's cloud-based voice service. Subject to third party service availability. Amazon, Alexa, Echo, and all related marks are trademarks of Amazon.com, Inc. or its affiliates. For more information see NissanUSA.com/connect/legal.

^[10] Availability may vary. NissanConnect® Services subscription may be required. Always read and follow instructions for safe update procedures. You may contact Nissan at 1-800-333-0207 for assistance with software updates. You may also visit your local Nissan dealer; dealership charges may apply.

^[11] Level 3 charging time estimated at the vehicle's maximum charging rate of 130kW. Charging time and capacity may vary based on power source, ambient temperature, battery temperature, condition, and age, and use of vehicle accessories while charging. For Level 1 home charging use only a 110-120 volt, 15-amp dedicated outlet for charging. For Level 2 home charging use only a 240 volt charging dock on a dedicated outlet for charging. See Customer Disclosure Form for details.

^[12] Public charging networks are provided by independent companies, and are not within Nissan's control. Availability of charging stations not guaranteed.

^[13] Zero tailpipe emissions.

^[14] Extra cost option.

^[15] Cargo shown for display purposes only. Cargo and load capacity

DIMENSIONS/CAPACITIES/WEIGHTS/MPGe

Exterior Dimensions — Inches	
Wheelbase	109.3
Overall length	182.9
Overall width	85.5
Overall height	65.4

Aerodynamics — Cd	
Drag coefficient	
FWD	0.30
AWD (except PLATINUM+)	0.31
PLATINUM+	0.33

Interior Dimensions — Inches	
Head room with/without moonroof (front)	37.9/39.6
Head room (rear)	38.3 (36.6 PLT+)
Leg room (front/rear)	42.3/37.0
Hip room (front/rear)	56.0/52.5
Shoulder room (front/rear)	57.1/55.9

Capacities	
Seating capacity	5
Interior passenger volume with/without moonroof (cu. ft.)	96.3/101.2
Total interior volume with/without moonroof (cu. ft.)	119.1/124.0
Cargo volume with rear seat up (cu. ft.) ¹⁵	22.8
Cargo volume with rear seat down (cu. ft.) ¹⁵	59.7

Towing/Payload	
Maximum towing capacity (lbs.) (AWD only) ⁵⁰	1,500

Curb Weights — Lbs.			
Base total	ENG/ENG+	EVO	PLT
FWD	4,322	4,599	-
AWD	4,606/4,897	4,890	5,049

2025 Fuel Economy MPGe ¹⁷	ENG	EVO	PLT
FWD	109/94/101	105/91/98	-
AWD	101/89/95	97/86/92	93/87/90
	97/86/92		89/84/87
	(ENGAGE+)		(w/ 20" wheels)

NISSAN ROADSIDE ASSISTANCE

Your peace of mind is on us. For 36 months or 36,000 miles, whichever comes first, your new Nissan is covered for the following:⁵¹

- Flat-tire changes
- Trip Interruption benefits
- Jump starts
- Vehicle lockouts
- Emergency fuel delivery

visit NissanUSA.com/ariya

PRINTED IN USA

Standard

Optional

ENG = ENGAGE

EVO = EVOLVE+

PLT = PLATINUM+



Sign up to get the latest on
Nissan vehicles, news, and events.

<https://www.nissanusa.com/brochures/request-brochure.html>