

# MAJOR PRODUCT CHANGES

The offerings on the 2026 Transit® Van bring a significant update to standard content, options, and packages when compared to prior model years. Standard Driver Assist Technologies help improve driver confidence and customers continue to see why the Ford Transit®, the best-selling commercial van is Built Ford Tough®<sup>1</sup>. Choose between Gas or Electric, RWD or AWD, Cargo Van, Passenger Van, Chassis Cab or Cutaway. Plus, with three roof heights, two wheelbases, and three overall lengths, the Transit Van is completely customizable to each customer's specific needs.

To learn more about the Transit body codes, go to [www.fordpro.com/en-us/tools/orders/ordering-production/transit-body-decoder](http://www.fordpro.com/en-us/tools/orders/ordering-production/transit-body-decoder)

## MODEL/SERIES/AVAILABILITY CHANGES

- Cargo Van
- Passenger Van XL
- Passenger Van XLT
- Cutaway
- Chassis Cab
- ★ **New/Changed**
  - E-Transit now offers a 156" WB for CC/CA (W5Z/W5P) (Late Availability)
- ★ **Deleted**
  - T-350 SRW 156" and 178" Wheelbase Cutaway RWD (F1P)
  - T-350 SRW 156" and 178" Wheelbase Cutaway AWD (F2P)
  - T-350 SRW 156" and 178" Wheelbase Chassis Cab RWD (F1Z)
  - T-350 SRW 156" and 178" Wheelbase Chassis Cab AWD (F2Z)

## MECHANICAL

- ★ **New/Changed**
  - Upgraded single Electrical Architecture with 5G modem capability
  - Provides Over-the-Air capability for vehicle software updates
  - Provides Over-the-Air capability for vehicle updates
  - Single On-board battery charger now standard on E-Transit – Dual on-board battery chargers become optional (65C)
  - Vapor Injection Heat pump becomes standard on E-Transit
  - 3.5L EcoBoost V6 GTDI Engine (99G) now available on low and medium roof Cargo Vans with RWD (E1Y, R1Y, W1Y, F1Y, E1C, R1C, W9C, or F7C) and no longer requires Ambulance prep package (47B)
- **Deleted**
  - Removed Flex Fuel capacity from 3.5L PFDi engine

## EXTERIOR

- ★ **New/Changed**
    - 253-Degree Rear Door Hinge Opening – Now optional on high-roof Passenger Van Variants (both LWB/LWB-EL)
    - New Exterior Badging Design
    - New Rear Taillamps with integrated BLIS sensors (when equipped)
    - Standard Tire Inflator and Sealant Kit on SRW Cargo Vans  
**Note:** Spare Tire/Wheel now optional. Includes 12-Volt Powerpoint in D-Pillar.
    - Forward Sensing System now standard across all models
    - Reverse Sensing System now standard on all Cargo and Passenger Van series (Rear Park Aid Kit standard in CC/CA)
    - Laminated Safety Glass (92A) now available on Mid/High Roof Gas Cargo configurations (previously optional on E-Transit Cargo only)
  - **Deleted**
    - Chrome accented HID headlamps (91A)
- Note:** Black accented HID headlamps are still available.
- ★ **New Colors**
    - Wild Green Metallic (FC) – Fleet Only
  - **Deleted Paint Colors**
    - Avalanche Gray (DR)
    - Abyss Gray (ME)

## INTERIOR/COMFORT

- ★ **New/Changed**
  - All-new 8" cluster display
  - SYNC® 4 with 12" center display standard on all series
  - Dark Palazzo Gray Cloth, 2-way manual Driver and Passenger heated seats (21M) – Standard on E-Transit and Passenger Van XLT, Optional on Cargo Van and Chassis/Cutaway
  - Electrician (66K), HVAC (66L) and General Contractor (66M) Trade Packages now available in Extended Long Length Configurations
- **Deleted**
  - SYNC® 3 with 4" center display
  - AM/FM stereo with 4.0" multi-function display
  - Vinyl Sunvisor with Illuminated Vanity Mirror (Driver and Passenger) (85C)

## SAFETY/SECURITY

- ★ **New/Changed**
  - Keyless push button Start standard on all models
  - Vehicle Maintenance Monitor (formerly 61C) now standard
- **Deleted**
  - None

## FORD CO-PILOT360® TECHNOLOGY

- ★ **New/Changed**
  - Ford Co-Pilot360® standard on all series:
    - Auto High Beam Headlamps
    - Camera Only Evasive Steering Assist
    - Lane-Keeping System
      - Lane-Keeping Alert
      - Lane-Keeping Assist
      - Driver Alert
      - Road Edge Detection
    - Intersection Assist
    - Pre-Collision Assist® with Automatic Emergency Braking (AEB)
      - Pedestrian Detection
      - Forward Collision Warning
      - Dynamic Brake Support
      - Automatic Emergency Braking (AEB) Oncoming
    - Post-Collision Braking
    - Rear View Camera (\*kit on Chassis/Cutaway)
    - Rear Parking Sensors (only on Cargo/Passenger Van)
    - Front Parking Sensors

## Product Changes and Features Availability

Features, options, and package content subject to change. Please check [www.fmcdealer.com](http://www.fmcdealer.com) for the most current information.

<sup>1</sup>Based on total U.S. industry-reported sales (2024 CY)

# MAJOR PRODUCT CHANGES

## FORD CO-PILOT360® TECHNOLOGY (continued)

- Ford Co-Pilot360® Assist 2.0 standard Passenger Van XLT (Optional on Cargo Van and Passenger Van XL) includes all of Ford Co-Pilot 360® standard features plus:
  - SiriusXM® with 360L
  - HD Radio™
  - Connected Navigation (1-Year included with Ford Connectivity Package)
  - Front Fog Lamps
  - Adaptive Cruise Control:
    - Stop-and-Go
    - Lane Centering
    - Predictive Speed Assist
  - 360-Degree Camera
  - Side Parking Sensors
  - Reverse Brake Assist
  - Blind Spot Information System (BLIS®) with Cross Traffic Alert
  - Short-Arm, Power Adjusting, Power Folding Heated Mirrors with Turn Signals
- **Note:** Mirror becomes Manual-Folding if Long-Arm (544) is selected
- Ford Co-Pilot360® Assist + optional on Cutaway/Chassis (61L)
- Ford Co-Pilot360® Assist 2.0 optional on Cargo Van and Passenger Van XL (61M)
- **Deleted**
  - None

## FUNCTIONAL

### ★ **New/Changed**

- Close Assist (43H) has been added to medium/high roof Cargo Vans and Passenger Van – Standard on E-Transit, optional on Cargo and Passenger Van variants
- 5G Wireless embedded modem standard across all models
- Vehicle Integration System 2.0 – Standard on Chassis/Cutaway, optional on Cargo Van
- Parcel Delivery Package (47G) now includes Delivery Assist Features – when put in park, vehicle automatically closes all open windows and automatically locks doors when driver exits the vehicle
- **Deleted**
  - Enhanced Active Park Assist (94B)
  - Center console with Right Side Shifter (67F)

## PACKAGES

### ★ **New/Changed**

- Shelving and Trade Packages (66H, , K, L, M) are now available on Extended Length Cargo Van variants
- Ford Connectivity Package (1-year included) – standard<sup>1</sup>
- Ford Connectivity Package (One-time purchase – 7 years) – optional<sup>2</sup> (94D)
- Ford Connectivity Package (1-year included)\*
- Ford Connectivity Package (One-time purchase – 7 years)\*\*

<sup>1</sup> Ford Connectivity Package included for one-year from warranty start date. Requires activation via Ford with credit card authorization; customer may cancel at any time. Evolving technology/cellular networks/vehicle capability may limit functionality and prevent operation of connected features. Ford may temporarily slow data speeds if such data usage reaches or exceeds 50GB within a billing cycle or due to network limitations. If a customer uses more than 50% of their data usage in a roaming country during a 60-day period, Ford may remove or limit the customer's data plan.

<sup>2</sup> Select option for a one-time purchase of Ford Connectivity Package. Ford Connectivity Package will be active for 7 years on this vehicle (non-transferrable to another VIN) from warranty start date. Requires activation via Ford app. Not available for fleet orders. Evolving technology/cellular networks/vehicle capability may limit functionality and prevent operation of connected features. Ford may temporarily slow data speeds if such data usage reaches or exceeds 50GB within a billing cycle or due to network limitations. If a customer uses more than 50% of their data usage in a roaming country during a 60-day period, Ford may remove or limit the customer's data plan.

## PACKAGES (continued)

- Ford Connectivity Package includes (features may vary by make and model):
  - Unlimited Wi-Fi Hotspot
  - Connected Navigation (requires Ford Co-Pilot360® Assist+ (61L) or Ford Co-Pilot360® Assist 2.0 (61M) package)
  - Audio and Video Streaming
  - Voice Assistant
  - Entertainment
- **Deleted**
- Interior Upgrade Package (96C) on Cargo Van Only
- Ambulance Prep Package (47F) on Chassis Cab

## LATE AVAILABILITY ITEMS

### ★ **New/Changed**

- HVAC Trade Package (66L) in low roof configurations (J2)
- Return of High-Roof Long Wheelbase Passenger Van RWD (X2X)
- Return of High-Roof Long Wheelbase Passenger Van AWD (X9X)

## Product Changes and Features Availability

Features, options, and package content subject to change. Please check [www.fmcdealer.com](http://www.fmcdealer.com) for the most current information.

<sup>1</sup>Based on total U.S. industry-reported sales (2024 CY)

**2026 TRANSIT**  
**STANDARD EQUIPMENT**

**E-TRANSIT CONFIGURATIONS**

<u>Series</u>	<u>Body Code</u>	<u>Body Type</u>	<u>Roof Height</u>	<u>Wheelbase</u>	<u>Drive</u>
<u>T-350</u>	<u>W1Y</u>	<u>Cargo Van</u>	<u>Low Roof</u>	<u>Long 148"</u>	<u>RWD/SRW</u>
<u>T-350</u>	<u>W9C</u>	<u>Cargo Van</u>	<u>Medium Roof</u>	<u>Long 148"</u>	<u>RWD/SRW</u>
<u>T-350</u>	<u>W1X</u>	<u>Cargo Van</u>	<u>High Roof</u>	<u>Long 148"</u>	<u>RWD/SRW</u>
<u>T-350</u>	<u>W3X</u>	<u>Cargo Van</u>	<u>High Roof</u>	<u>Extended 148"</u>	<u>RWD/SRW</u>
<u>T-350</u>	<u>W5Z</u>	<u>Chassis Cab</u>	<u>Low Roof</u>	<u>Long 156"</u>	<u>RWD/SRW</u>
<u>T-350</u>	<u>W5Z</u>	<u>Chassis Cab</u>	<u>Low Roof</u>	<u>Extended 178"</u>	<u>RWD/SRW</u>
<u>T-350</u>	<u>W5P</u>	<u>Cutaway</u>	<u>Low Roof</u>	<u>Long 156"</u>	<u>RWD/SRW</u>
<u>T-350</u>	<u>W5P</u>	<u>Cutaway</u>	<u>Low Roof</u>	<u>Extended 178"</u>	<u>RWD/SRW</u>

# 2026 TRANSIT STANDARD EQUIPMENT

EXTERIOR	CARGO VAN	PASSENGER VAN XL	PASSENGER VAN XLT	CUTAWAY	CHASSIS CAB
Body Side Moldings – Carbon Black	•	•	•	•	•
Front License Plate Bracket	•	•	•	•	•
<b>Bumpers</b>					
Front Bumper – Body Colored	—	—	•	—	—
Front Bumper – Carbon Black, Body Colored with Lower Valence	•	•	—	•	•
Rear Bumper – Carbon Black, without Integral Step. For Chassis Cab and Cutaway variants, rear bumper DELETE is standard.	•	•	•	—	—
<b>Doors – Rear</b>					
50/50 Hinged Rear Door. 180-degree opening is standard on all low/medium- roof cargo vans and all passenger vans. 253-degree Opening is standard on all high roof cargo vans and OPTIONAL on all low/medium-roof variants and High-Roof Passenger Vans with 148" wheelbase	•	•	•	—	—
<b>Doors – Side</b>					
Sliding Passenger-side Door	•	•	•	—	—
<b>Exterior Lighting – Front</b>					
Front Fog Lamps	—	—	•	—	—
Halogen Headlamps with Autolamp (on Gas Variants only)	•	•	•	•	•
Black High-Intensity Discharge (HID) Headlamps . Standard on XLT Passenger Van and E-Transit	•* (*E-Transit)	—	•	•* (*E-Transit)	•* (*E-Transit)
Headlamp Courtesy Delay <b>Note:</b> The headlamps stay on for a set period of time after the owner turns off the ignition.	•	•	•	•	—
Roof and Side Marker Lamps (Included on all 10,000lb+ GVW variants) Included on DRW Cargo Van, Passenger Van XL and Passenger Van XLT)	•	•	•	•	•
<b>Exterior Lighting – Rear</b>					
Center High Mount Stop Lamp (CHMSL)	•	•	•	—	—
Taillamps	•	•	•	—	—
Separate Stop Turn Tail Lamp – LED Enabled	—	—	—	•	•
<b>Fuel (n/a with E-Transit)</b>					
Auxiliary Fuel Port. Not available with E-Transit.	•	•	•	•	•
Fuel Tank – Capless Fuel Fill, 25 U.S. gallons (midship)	•	•	•	•	•
<b>Grille</b>					
Honeycomb Mesh Grille with Carbon Black Surround	•	•	—	•	•
Honeycomb Mesh Grille with Chrome Surround	—	—	•	—	—
Three Bar Grille with Dynamic Blue Center Bars and Chrome Surround. Standard on E-Transit.	•* *E-Transit only	—	—	•* *E-Transit only	•* *E-Transit only
<b>Exterior Mirrors</b>					
Mirror Delete	—	—	—	•	•
Short-Arm, Power Adjusting, Manual-Folding	•	•	—	—	—
Short-Arm, Power Adjusting, Power-Folding Heated with Turn Signals	—	—	•	—	—
<b>Tires – Single Rear Wheel (SRW)</b>					
235/65R16C 121/119 R BSW all-season	•	•	•	•	•
<b>Tires – Dual Rear Wheel (DRW)</b>					
205/75R16C 113/111 BSW all-season (AWD, 11,000lb GVWR or RWD with Heavy-Duty Front Axle configurations only)	•	•	•	•	•
<b>Towing</b>					
Rear Recovery Tow Hook	•	•	•	—	—
<b>Wheels – SRW</b>					
16" Silver Steel Wheel with Black Hubcap (Standard Front Axle configurations only)	•	•	—	•	•
16" Steel Wheel with Full Size Silver Wheel Cover (Standard Front Axle configurations and E-Transit only)	•* *E-Transit only	—	•	•* *E-Transit only	•* *E-Transit only

# 2026 TRANSIT STANDARD EQUIPMENT

EXTERIOR (continued)	CARGO VAN	PASSENGER VAN XL	PASSENGER VAN XLT	CUTAWAY	CHASSIS CAB
16" Silver Steel Wheel. Includes Silver Hubcaps with Exposed Lug Nuts (Heavy-Duty Front Axle configurations only)	•	•	•	•	•
<b>Wheels – DRW</b>					
16" Heavy-Duty Silver Steel Wheel. Includes Silver Hubcaps with Exposed Lug Nuts <b>Note:</b> The center ornament only comes on the front wheels, and not on the rear wheels.	•	•	•	•	•
Wheels-Spare Tire					
★ Tire Inflator and Sealant Kit in lieu of spare tire <b>Note:</b> Not Available with DRW. Includes 12-Volt Powerpoint in D-Pillar	•	-	-	-	-
Full-size Spare Tire and Wheel	-	•	•	-	-
<b>Windows/Glass</b>					
Windows All-around	—	•	•	—	—
Rear-windows	—	•	•	—	•
No Cargo Area Windows	•	—	—	—	—
High-Strength Laminated Glass (Sliding Doors only)	•	—	—	—	—
Front Solar Tinted Glass	•	•	•	•	•
Rear Solar Tinted Glass (Std. on Low Roof Only)	-	•	•	-	-
<b>Wipers – Front</b>					
Rain-Sensing Windshield Wipers	•	•	•	•	•
<b>INTERIOR</b>					
Step Well Pads – Black	•	•	•	•	•
<b>Center Console</b>					
Medium Center Console with integrated shifter and dual cupholders	•	•	—	•	•
Medium Center Console with Integrated Rotary Gear Shift Dial and single cup holder	•*	—	—	•*	•*
Large Center Console with Integrated Shifter, dual cupholders and additional storage area	—	—	•	—	—
Cruise Control					
Cruise Control which includes Adjustable Speed Limiting Device (ASLD)	•	•	•	•	•
<b>Door-Locks and Windows</b>					
Glove Box – Locking	•	•	•	•	•
Rear Cargo Door – Interior Exit Handle	•	—	—	—	—
Rear Cargo Door – Exterior Lock Cylinder	•	•	•	—	—
Power Equipment Group (Power Locks and Windows) with Remote Keyless-Entry	•	•	•	•	•
★ Push-Button Start	•	•	•	•	•
<b>Floor Covering</b>					
Vinyl, Front only	•	—	—	•	•
Vinyl, Front and Rear	—	•	—	—	—
Carpet, Front and Rear	—	—	•	—	—
<b>Rearview Mirror</b>					
Rearview Mirror (When Equipped with Rear Glass).	—	•	•	—	•
Rearview Mirror Delete (When Equipped Without Rear Glass)	•	—	—	•	—
<b>Interior Lighting</b>					
Front Dome Lamp with Map Lights and Theater Dimming	•	•	•	•	•
Rear Dome Lamp with Map Lights and Theater Dimming	—	—	•	—	—
Partial Rear Compartment Lighting (2 LED lights located at C-pillar)	—	—	—	•	•
Full Rear Compartment Lighting	—	•	•	—	—
Accessory Delay – 30 minutes	•	•	•	•	•
<b>Interior Trim</b>					
A-Pillar Assist Handles (Driver and Passenger-side)	•	•	•	•	•
B-Pillar Assist Handle (Passenger-side)	•*	•	•	—	—
D-Pillar Weld Nuts	•	—	—	—	—
Headliner – Cloth, Front only	•	—	—	•	•
Headliner – Cloth, Full length	—	•	•	—	—

★ = New for this model year

# 2026 TRANSIT STANDARD EQUIPMENT

INTERIOR (continued)	CARGO VAN	PASSENGER VAN XL	PASSENGER VAN XLT	CUTAWAY	CHASSIS CAB
<b>Seating – Front</b>					
Driver and Front-passenger Manual Reclining Bucket Seats with Adjustable Headrest (Includes driver-side and passenger-side inboard armrest)	•	•	•	•	•
★ Driver and Front-passenger Heated Manual Reclining Bucket Seats with Adjustable Headrest (Includes driver-side and passenger-side inboard armrest)	•* *E-Transit only	—	•	•* *E-Transit only	•* *E-Transit only
Rear-Seat(s) Recline and Inboard Armrest <b>Note:</b> Last row of seats do not recline.	—	—	•	—	—
Manual Driver-side Lumbar Support	—	•	•	—	—
12-Passenger Seating. 1 <sup>st</sup> row: 2 seats, 2 <sup>nd</sup> row: 3 seats, 3 <sup>rd</sup> row: 3 seats, 4 <sup>th</sup> row: 4 seats. Standard with Long Length Passenger Van.	—	•	•	—	—
15-Passenger Seating. 1 <sup>st</sup> row: 2 seats, 2 <sup>nd</sup> row: 3 seats, 3 <sup>rd</sup> row: 3 seats, 4 <sup>th</sup> row: 3 seats, 5 <sup>th</sup> row: 4 seats. Standard with Extended Length Passenger Van.	—	•	•	—	—
<b>Sun Visors</b>					
Sun Visors	•	•	•	•	•
<b>FUNCTIONAL</b>					
Alternator – 250 amp (3.5L PFDi V6 and 3.5L EcoBoost® V6 engines).	•	•	•	•	•
Frame Rail Extension Adapters	—	—	—	•	•
Horn – Single-note	•	•	•	•	•
<b>Air Conditioning</b>					
Front only	•	—	—	•	•
Front and Rear	—	•	•	—	—
<b>Audio</b>					
Antenna – Fender Mounted	•	•	•	•	•
★ SYNC® 4 with 12" center display, AM/FM stereo, Bluetooth, Dual USB ports, Enhanced Voice Recognition, Electronic Climate Control and Connectivity Package includes: —Information On Demand Panel —Wireless Apple CarPlay® and Android Auto™ Compatibility —Cloud Connected —911 Assist® —Digital Owner's Manual —Conversational Voice Command Recognition	•	•	•	•	•
<b>Batteries</b>					
Single AGM Battery – 70 amp-hr	•	•	•	•	•
<b>Brakes</b>					
Brakes – 4-wheel Anti-lock Disc Brakes <b>Note:</b> Depending on driving habits and configuration, the brake pad life is up to 50% improved. In addition, brake pad wear indicators are now included and will send a warning message to the cluster if brake pads reach a certain wear threshold.	•	•	•	•	•
Parking Brake – Electric (SRW configurations only)	•	•	•	•	•
Parking Brake – Mechanical (9,950lb DRW GVWR configurations only)	•	•	•	•	•
Parking Brake – Push Down Mechanical (11,000lb GVWR configurations only)	•	—	—	•	•
<b>Charging (E-Transit only)</b>					
★ Single Onboard battery charger	• E-Transit Only	—	—	• E-Transit Only	• E-Transit Only
Vehicle Charge Capability — —→SAE J1772 CCS (Combo Connector System) Charge Port capable of charging on 120V, 240V and Direct Current (DC Fast Charge) —→Level 2 Peak Charging Rate of 11.2kw	• E-Transit Only	—	—	• E-Transit Only	• E-Transit Only

★ = New for this model year

# 2026 TRANSIT STANDARD EQUIPMENT

FUNCTIONAL (continued)	CARGO VAN	PASSENGER VAN XL	PASSENGER VAN XLT	CUTAWAY	CHASSIS CAB
<b>Driver Assist Packages:</b>					
<ul style="list-style-type: none"> <li>★ Ford Co-Pilot360® (Cargo Van/Passenger Van)</li> <li>● Auto High Beam Headlamps</li> <li>● Camera Only Evasive Steering Assist</li> <li>● Lane-Keeping System                             <ul style="list-style-type: none"> <li>● Lane-Keeping Alert</li> <li>● Lane-Keeping Assist</li> <li>● Driver Alert</li> <li>● Road Edge Detection</li> </ul> </li> <li>● Intersection Assist</li> <li>● Pre-Collision Assist® with Automatic Emergency Braking (AEB)                             <ul style="list-style-type: none"> <li>● Pedestrian Detection</li> <li>● Forward Collision Warning</li> <li>● Dynamic Brake Support</li> <li>● Automatic Emergency Braking (AEB) Oncoming</li> </ul> </li> <li>● Post-Collision Braking</li> <li>● Rear View Camera</li> <li>● Rear Parking Sensors</li> <li>● Front Parking Sensors</li> </ul>	●	●	●	—	—
<ul style="list-style-type: none"> <li>★ Ford Co-Pilot360® (Chassis Cab/Cutaway)</li> <li>● Auto High Beam Headlamps</li> <li>● Camera Only Evasive Steering Assist</li> <li>● Lane-Keeping System                             <ul style="list-style-type: none"> <li>● Lane-Keeping Alert</li> <li>● Lane-Keeping Assist</li> <li>● Driver Alert</li> <li>● Road Edge Detection</li> </ul> </li> <li>● Intersection Assist</li> <li>● Pre-Collision Assist® with Automatic Emergency Braking (AEB)                             <ul style="list-style-type: none"> <li>● Pedestrian Detection</li> <li>● Forward Collision Warning</li> <li>● Dynamic Brake Support</li> <li>● Automatic Emergency Braking (AEB) Oncoming</li> </ul> </li> <li>● Post-Collision Braking</li> <li>● Rearview Camera Kit*</li> <li>● Front Parking Sensors</li> </ul> <p><b>Note:</b> *For incomplete vehicles, upfitter must add a rear view camera to vehicles that are 10,000lb GVWR or less to complete the vehicle and meet FMVSS 111 requirements. Rear Video Camera and Prep Kit is available as a dunnage kit that requires upfitter installation.</p>	—	—	—	●	●
<ul style="list-style-type: none"> <li>★ Ford Co-Pilot 360® Assist 2.0 – includes all of Ford Co-Pilot 360® standard features plus:</li> <li>● SiriusXM® with 360L</li> <li>● HD Radio™</li> <li>● Connected Navigation (1-Year included with Ford Connectivity Package)</li> <li>● Front Fog Lamps</li> <li>● Adaptive Cruise Control:                             <ul style="list-style-type: none"> <li>● Stop-and-Go</li> <li>● Lane Centering</li> <li>● Predictive Speed Assist</li> </ul> </li> <li>● 360-Degree Camera</li> <li>● Side Parking Sensors</li> <li>● Reverse Brake Assist</li> <li>● Blind Spot Information System (BLIS®) with Cross Traffic Alert</li> <li>● Short-Arm, Power Adjusting, Power Folding Heated Mirrors with Turn Signals</li> </ul> <p><b>Note:</b> Mirror becomes Manual-Folding if Long-Arm (544) is selected</p>	—	—	●	—	—

★ = New for this model year

# 2026 TRANSIT STANDARD EQUIPMENT

FUNCTIONAL (continued)	CARGO VAN	PASSENGER VAN XL	PASSENGER VAN XLT	CUTAWAY	CHASSIS CAB
<p>★5G Modem  <b>Note:</b> Modem activation is required to enable Ford app remote features and most Connected Services. Ford Telematics™ and Data Services Prep included for Fleet only. 5G WiFi Modem provides data to support telematics and data services including but not limited to vehicle location, speed, idle time, fuel, vehicle diagnostics and maintenance alerts. Device enables telematics services through Ford or authorized providers. Activate at www.fleet.ford.com or call 833-FCS-Ford (833-327-3673).</p>	•	•	•	•	•
<p>Ford Connectivity Package (1-year included)*                      Ford Connectivity Package includes (features may vary by make and model):</p> <ul style="list-style-type: none"> <li>●Unlimited Wi-Fi@ Hotspot</li> <li>●Connected Navigation (requires Ford Co-Pilot360® Assist+ or Ford Co-Pilot360® Assist 2.0 (61L/61M) package</li> <li>●Audio and Video Streaming</li> <li>●Voice Assistant</li> <li>●Entertainment</li> </ul> <p><b>Note:</b>*Ford Connectivity Package included for one-year from warranty start date. Requires activation via Ford app with credit card authorization; customer may cancel at any time. Evolving technology/cellular networks/vehicle capability may limit functionality and prevent operation of connected features. Ford may temporarily slow data speeds if such data usage reaches or exceeds 50GB within a billing cycle or due to network limitations. If a customer uses more than 50% of their data usage in a roaming country during a 60-day period, Ford may remove or limit the customer's data plan.</p>	•	•	•	•	•
<p>Telematics Essentials**  <b>Note:</b> A complimentary version of Ford Telematics that gives fleet customers access to vehicle health insights such as odometer reading, diagnostic trouble codes and information around oil life, engine hours and recalls</p> <p>**Complimentary product. Available on vehicles with embedded modem. Requires modem activation. Terms and conditions apply. Telematics service and features, and access to vehicle data depend on compatible AT&amp;T network availability. Evolving technology/cellular networks/vehicle capability may limit functionality and prevent operation of connected features.</p>	•	•	•	•	•
<p><b>Frontal Area Limitation</b>                      Base Frontal Area Limitation  <b>Note:</b> Provides a Vehicle Emission Control Information label with a frontal area restriction up to 72 ft². Frontal area limitation requires second unit body to meet profile restrictions. For additional information please reference the Incomplete Vehicle Manual and SVE Bulletins.</p>	—	—	—	•	•
<p><b>Instrumentation</b>                      ★All-new 8" cluster display                      Tachometer, Fuel Level and Coolant Temperature (Gas Engines); Battery Level, Power Gauge and Power Availability (E-Transit)</p>	•	•	•	•	•
<p><b>Interior Power</b>                      PowerPoint – 12V  <b>Note:</b> One is located in the instrument panel and one in center console.</p>	•	•	•	•	•

★ = New for this model year

# 2026 TRANSIT STANDARD EQUIPMENT

FUNCTIONAL (continued)	CARGO VAN	PASSENGER VAN XL	PASSENGER VAN XLT	CUTAWAY	CHASSIS CAB
USB Ports – 5 amps <b>Note:</b> Depending on seating configuration, one is located in each of the 2 <sup>nd</sup> row, 3 <sup>rd</sup> row, 4 <sup>th</sup> row and 5 <sup>th</sup> row.	—	•	•	—	—
<b>Speed Limiting Device</b>					
Top Speed Governor. 65-mph Governed Top Speed, Standard on E-Transit Cutaway and Chassis Cab. 75-mph Governed Top Speed standard on E-Transit Cargo Van.	•* *E-Transit only	—	—	•* *E-Transit only	•* *E-Transit only
Reverse Speed Limiter – Standard on E-Transit	•* *E-Transit only	—	—	•* *E-Transit only	•* *E-Transit only
<b>Start – Keyless</b>					
★ Passive Start with push-button functionality	•	•	—	•	•
★ Intelligent Access with push-button start	—	—	•	—	—
<b>Steering</b>					
Electric Power Assisted Steering (EPAS)	•	•	•	•	•
Steering – Power Rack and Pinion	•	•	•	•	•
Steering Wheel – Tilt and Telescoping	•	•	•	•	•
<b>Suspension</b>					
Front – Independent MacPherson-strut, Stabilizer Bar	•	•	•	•	•
Rear – Leaf Springs, Heavy-duty Gas Shock Absorbers. Gas engine configurations only.	•	•	•	•	•
Rear – Independent with coil springs, semi-trailing arm (STA) and stabilizer bar. E-Transit only.	•* *E-Transit only	—	—	•* *E-Transit only	•* *E-Transit only
<b>SAFETY/SECURITY</b>					
Autolocking Drive Away with Crash Unlocking.	•	•	•	•	•
AdvanceTrac® w/Roll Stability Control™ (RSC®)	•	•	•	•	•
SecuriLock® Passive Anti-Theft System (PATS) with engine immobilizer	•	•	•	•	•
SOS Post-Crash Alert System™. <b>Note:</b> Automatically flashes the hazard lights and intermittently sounds the horn when the airbag deploys.	•	•	•	•	•
Tire Pressure Monitoring System (TPMS).	•	•	•	•	•
Stationary Elevated Idle Control (SEIC)	•	•	•	•	•
<b>Airbags</b>					
Driver and Passenger Airbags	•	•	•	•	•
Passenger-side Airbag Cut-off Switch. Not available with Passenger Seat Delete (21J, 21K and 211) or Right Hand Door Delete (60X) configurations	•	—	—	•	•
Safety Canopy® Side-curtain Airbags	•	•	•	•	•

# 2026 TRANSIT OPTIONAL EQUIPMENT

BODY CODES	Body Type	CARGO VAN	PASSENGER VAN XL	PASSENGER VAN XLT	CUTAWAY	CHASSIS CAB
	Order Code	101A	301A	302A	501A	701A
<b>NOTE: Body Codes have changed, double-check before inputting orders. Also, you must input Wheelbase into CONCEPS now</b>						
<b>LOW ROOF</b>						
<b>Transit-150 (GVWR: Cargo Van 8,670# (incomplete), 8,800# (complete))</b>						
Regular (130")	RWD	E1Y	—	—	—	—
Regular (130")	AWD	E2Y	—	—	—	—
Long (148")	RWD	E1Y	—	—	—	—
Long (148")	AWD	E2Y	—	—	—	—
<b>Transit-250 (GVWR: Cargo Van 9,070# (incomplete), 9,150# (complete)   Cutaway 9,070#   Chassis Cab 9,070#)</b>						
Regular (130")	RWD	R1Y	—	—	—	—
Regular (130")	AWD	R2Y	—	—	—	—
Regular (138")	RWD	—	—	—	R5P	R5Z
Regular (138")	AWD	—	—	—	R7P	R7Z
Long (148")	RWD	R1Y	—	—	—	—
Long (148")	AWD	R2Y	—	—	—	—
Long (156")	RWD	—	—	—	R5P	R5Z
Long (156")	AWD	—	—	—	R7P	R7Z
<b>Transit-350 (GVWR: Cargo Van 9,500#   Passenger Van: for RWD 9,250# with 2-passenger (47E), 9,400# with 15/12 passenger (96K/P); for AWD: 9,250# with 2-passenger (47E), 9,400# with engine-type 99G and 12-passenger and 9,550# with engine-type 998 and 12/15 passenger (96K/P)   Cutaway 9,500#   Chassis Cab 9,500#)</b>						
Regular (130")	RWD	W1Y	—	—	—	—
Regular (130")	AWD	W2Y	—	—	—	—
Regular (138")	RWD	—	—	—	W5P	W5Z
Regular (138")	AWD	—	—	—	W7P	W7Z
Long (148")	RWD	W1Y	X2Y	X2Y	—	—
Long (148")	AWD	W2Y	X9Y	X9Y	—	—
Long (156")	RWD	—	—	—	W5P	W5Z
Long (156")	AWD	—	—	—	W7P	W7Z
Extended (178")	RWD	—	—	—	W5P	W5Z
Extended (178")	AWD	—	—	—	W7P	W7Z
<b>Transit-350 HD SRW (GVWR: Cargo Van 9,950#   Cutaway 9,950#   Chassis Cab 9,950#) (Max 80 MPH)</b>						
Long (148")	RWD	F1Y	—	—	—	—
Long (148")	AWD	F2Y	—	—	—	—
<b>Transit-350 HD DRW (GVWR: Cutaway 9,950#   Chassis Cab 9,950#)</b>						
Regular (138")	RWD	—	—	—	F6P	F6Z
Regular (138")	AWD	—	—	—	F8P	F8Z
Long (156")	RWD	—	—	—	F6P	F6Z
Long (156")	AWD	—	—	—	F8P	F8Z
Extended (178")	RWD	—	—	—	F6P	F6Z
Extended (178")	AWD	—	—	—	F8P	F8Z
<b>Transit-350 HD DRW (GVWR: Cutaway 11,000#   Chassis Cab 11,000#)</b>						
Regular (138")	RWD	—	—	—	U6P	U6Z
Regular (138")	AWD	—	—	—	U8P	U8Z
Long (156")	RWD	—	—	—	U6P	U6Z
Long (156")	AWD	—	—	—	U8P	U8Z
Extended (178")	RWD	—	—	—	U6P	U6Z
Extended (178")	AWD	—	—	—	U8P	U8Z
<b>MEDIUM ROOF</b>						
<b>Transit-150 (GVWR: Cargo Van 8,670# (incomplete), 8,800# (complete))</b>						
Long (148")	RWD	E1C	—	—	—	—
Long (148")	AWD	E2C	—	—	—	—
<b>Transit-250 (GVWR: Cargo Van 9,070# (incomplete), 9,150# (complete))</b>						
Long (148")	RWD	R1C	—	—	—	—
Long (148")	AWD	R2C	—	—	—	—
<b>Transit-350 (GVWR: Cargo Van 9,500#   Passenger Van RWD: 9,250# 2-Passenger (47E), 9,400# 15-passenger (incomplete) (96K), 9,500# 12/15-passenger (complete) (96K/P); AWD: 9,250# 2-Passenger (47E), 9,550# 12/15-Passenger (96K/P)</b>						
Long (148")	RWD	W9C	X2C	X2C	—	—
Long (148")	AWD	W2C	X9C	X9C	—	—
<b>Transit-350 HD SRW (GVWR: Cargo Van 9,950#) (Max 80 MPH)</b>						
Long (148")	RWD	F7C	—	—	—	—
Long (148")	AWD	F8C	—	—	—	—
<b>HIGH ROOF</b>						
<b>Transit-250 (GVWR: Cargo Van 9,070# (incomplete), 9,150# (complete))</b>						
Long (148")	RWD	R1X	—	—	—	—
Long (148")	AWD	R2X	—	—	—	—
Extended (148")	RWD	R3X	—	—	—	—
Extended (148")	AWD	R3U	—	—	—	—
<b>Transit-350 (GVWR: Cargo Van 9,500#   Passenger Van RWD: 9,250# 2-Passenger (47E), 9,400# engine type 998, 15-passenger (incomplete) (96K), engine type 99G 12/15-passenger (96K/P), 9,500# engine type 998, 12/15-passenger (96P); AWD: 9,250# 2-passenger (47E), 9,550# 12/15-passenger (96K/P)</b>						
Long (148")	RWD	W1X	X2X	X2X	—	—
Long (148")	AWD	W2X	X9X	X9X	—	—
Extended (148")	RWD	W3X	—	—	—	—
Extended (148")	AWD	W3U	—	—	—	—
<b>Transit-350 HD SRW (GVWR: Cargo Van 9,950#) (Max 80 MPH)</b>						
Long (148")	RWD	F5X	—	—	—	—
Long (148")	AWD	F6X	—	—	—	—
Extended (148")	RWD	F7X	—	—	—	—
Extended (148")	AWD	F8X	—	—	—	—
<b>Transit-350 HD DRW (GVWR: Cargo Van 9,950#)</b>						
Extended (148")	RWD	F4X	—	—	—	—

★ = New for this model year

S = Standard / O = Optional / P = Packaged Option / F = Fleet Option  
with valid FIN code / I = Included

# 2026 TRANSIT OPTIONAL EQUIPMENT

BODY CODES	Body Type	CARGO VAN	PASSENGER VAN XL	PASSENGER VAN XLT	CUTAWAY	CHASSIS CAB
	Order Code	101A	301A	302A	501A	701A
<b>HIGH ROOF (continued)</b>						
Extended (148")	AWD	F4U	—	—	—	—
<b>Transit-350 HD DRW (GVWR: Passenger Van 10,360#)</b>						
Extended (148")	RWD	—	U4X	U4X	—	—
Extended (148")	AWD	—	U5X	U5X	—	—
<b>Transit-350 HD DRW (GVWR: Cargo Van 11,000#)</b>						
Extended (148")	RWD	U8X	—	—	—	—
Extended (148")	AWD	U8U	—	—	—	—
<b>POWERTRAIN</b>						
<b>Engine</b>						
3.5L PFDi V6. Not available on Cargo Van (U4X, U8X and U8U), Passenger Van XL/XLT (U5X), Cutaway (U6P and U8P) or Chassis Cab (U6Z and U8Z).	998	S	S	S	S	S
<b>Note:</b> Includes port injection and E-85 Flex-Fuel Capable capability						
3.5L EcoBoost® V6. Standard on Cargo Van (U4X, U8X and U8U), Passenger Van XL/XLT (U5X), Cutaway (U6P and U8P) and Chassis Cab (U6Z and U8Z).	99G	S/O	S/O	S/O	S/O	S/O
Electric Motor (E-Transit with Enhanced Range) with 89kWH High-Voltage Battery available on Cargo Van (W1Y, W9C, W1X and W3X) and 156"/178" Chassis Cab/Cutaway (W5Z, W5P)	99M	S E-Transit Only	—	—	S E-Transit Only	S E-Transit Only
<b>Transmission</b>						
10-Speed Automatic Overdrive with SelectShift®. Auxiliary Transmission Oil Cooler is standard. Not available with E-Transit.	44U	S on Gas	S on Gas	S on Gas	S on Gas	S on Gas
Single-Speed Transmission. Only available with the Electric Motor/E-Transit (99M).	44A	S on E-Transit	—	—	S on E-Transit	S on E-Transit
<b>EXTERIOR</b>						
Roof Marker Lamp Delete. Standard on SRW Cargo Van and Passenger Van XL/XLT <b>Note:</b> Vehicle shipped with temporary tape over five (5) holes. Upfitter is responsible to seal holes on Cutaway only.	18A	S	S	S	O	—
<b>Bumpers</b>						
Front Bumper – Body Colored. <b>Note:</b> Body colored front bumpers are offered in every exterior color. The front bumper will match the exterior color. Includes Front Fog Lamps.	53G	O	O	S	O	O
<b>Doors</b>						
Right Hand Door Delete. Included with School Bus Prep Package (47C), MFSAB Prep Package (47Q) and available with Shuttle Bus Prep Package (47S). <b>Note:</b> Intended for upfitters who plan to modify the factory roof. Includes only front driver airbag. See Package/Option page for details.	60X	—	—	—	I/P/O	—
<b>Note:</b> Not compatible with Ford Co-Pilot 360® + Package (61L)						
★Close Assist Feature on side sliding door. This feature is available on medium/high roof cargo and passenger vans (not available on low roof variants). Standard on medium/high roof E-Transit. Intelligent Access with push-button start (85L) included.	43H	O S on E-Transit	O	S	—	—
<b>Exterior Lighting – Front</b>						
Black High-Intensity Discharge (HID) Headlamps. Standard on E-Transit. Not available on Chassis Cab and Cutaway with 3.5L PFDi V6 (998) engine. <b>Note:</b> HID headlamps emit a brighter, more natural light than halogen headlamps, which can help improve visibility. HID headlamps also include LED signature surround.	91C	O	O	S	O	O
Wiper Activated Headlamps	91B	O	O	S	O	O
Front Fog Lamps (included in Ford Co-Pilot 360® Assist + or 2.0 packages) <b>Note:</b> Auxiliary lamps that are generally integrated into the front fascia and designed to help illuminate the roadway during poor visibility.	55D	I	I	S	I	I
<b>Fuel Tank</b>						
Extended Range Fuel Tank – Capless Fuel Fill, 31 U.S. gallons (midship). Not available on E-Transit, Regular Length configurations. Only available on Long WB, Extended WB with EcoBoost (99G) and 11,000GVW Chassis Cab/Cutaway (U6P/U6Z/ U8P/U8Z) configurations	655	O	O	O	O	O

★ = New for this model year

S = Standard / O = Optional / P = Packaged Option / F = Fleet Option  
with valid FIN code / I = Included

# 2026 TRANSIT OPTIONAL EQUIPMENT

BODY CODES	Body Type	CARGO VAN	PASSENGER VAN XL	PASSENGER VAN XLT	CUTAWAY	CHASSIS CAB
	Order Code	101A	301A	302A	501A	701A
<b>EXTERIOR (continued)</b>						
Auxiliary Fuel Port Extension Line. Optional on Cargo Van Long and Extended Length and includes Extended Range Fuel Tank (655). <b>Note:</b> Allows for access to the Auxiliary Fuel Port without removing fuel tank	63F	O	—	—	—	—
<b>Hinges (rear door)</b>						
★253-Degree Rear Door Opening. Standard on LWB/LWB-EL high roof Cargo Vans. Optional on 148" Wheelbase low/medium roof and high roof Passenger Van variants. Included in Parcel Delivery Package (47G) <b>Note:</b> N/A on regular Length Van (130"WB)	18P	S/O/I	O	O	—	—
<b>Mirrors – Short-Arm</b>						
Power Adjusting, Manual-Folding, Non-turn signal. Non-heated mirror. Not available with Ford Co-Pilot360® Assist+ and Ford Co-Pilot360® Assist 2.0 (61L/61M)	541	S	S	—	O	O
Power Adjusting, Power-Folding Heated with Turn Signals. Not available with Right Hand Door Delete (60X). Included with Ford Co-Pilot360® Assist+ and Ford Co-Pilot360® Assist 2.0 (61L/61M) and STD on XLT Passenger Van		I/P	I/P	S	I/P	I/P
<b>Mirrors – Long-Arm</b>						
Power Adjusting, Manual-Folding. Not available with Ford Co-Pilot360® Assist+ and Ford Co-Pilot360® Assist 2.0 (61L/61M)	543	O	O	—	O	O
Power Adjusting, Manual-Folding Heated with Turn Signals. Includes BLIS and therefore requires Ford Co-Pilot360® Assist + and Ford Co-Pilot360® Assist 2.0 (61L/61M)	544	O	O	O	O	O
<b>Running Boards</b>						
Passenger Running Board. <b>Note:</b> Running board covers the B-C Pillar Passenger-side.	68H	O	O	O	—	—
Extended Length Passenger Running Board <b>Note:</b> Not Available with E-Transit. Running board covers the A-B Pillar Driver side and A-C Pillar Passenger side	68J	O	O	O	—	—
<b>Trailer</b>						
Tow/Haul Mode with Trailer Wiring Provisions. Included in Motorhome Prep Package (47M). Refer to the Packaged Options section for more details.	53D	O	O	O	O/I	O
Trailer Brake Controller (TBC). <b>Note:</b> This option must be added at time of ordering. Neither a Ford or aftermarket trailer brake controller can be added later (after vehicle is built). Requires Heavy-Duty Trailer Tow Package (53B) or Tow/Haul Mode with Trailer Wiring Provisions (53D). Not available with E-Transit.	67D	O	O	O	O	O
Heavy-Duty Trailer Tow Package <b>Note:</b> Deletes Rear Tow Hook. Refer to the Packaged Options section for more details	53B	O	O	O	—	—
<b>Wheels – SRW</b>						
16" Steel Wheel with Full Silver Wheel Cover (Standard Front Axle configurations only and standard with E-Transit). Included with Exterior Upgrade Package – SRW (Standard Front Axle configurations only) (18D).	64H	S/I/O S on E-Transit	O	S	S/I/O S on E-Transit	S/I/O S on E-Transit
16" Silver Aluminum Alloy Wheel (Standard Front Axle configurations only). Available with Exterior Upgrade Package – SRW (Standard Front Axle configurations only) (18D).	647	O	O	O	O	O
16" Aluminum Alloy Wheel with Black Accents (Standard Front Axle configurations only). Available with Exterior Upgrade Package – SRW (Standard Front Axle configurations only) (18D).	644	O	O	O	O	O
16" Sparkle Silver Alloy Wheel (Heavy-Duty Front Axle configurations only). Available with Exterior Upgrade Package – SRW (Heavy-Duty Front Axle configurations only) (18D) – Late Availability	64K	O	O	O	O	O
16" Matte Black Alloy Wheel (Heavy-Duty Front Axle configurations only). Available with Exterior Upgrade Package – SRW (Heavy-Duty Front Axle configurations only) (18D) – Late Availability	64G	O	O	O	O	O

★ = New for this model year

S = Standard / O = Optional / P = Packaged Option / F = Fleet Option  
with valid FIN code / I = Included

# 2026 TRANSIT OPTIONAL EQUIPMENT

BODY CODES	Body Type	CARGO VAN	PASSENGER VAN XL	PASSENGER VAN XLT	CUTAWAY	CHASSIS CAB
	Order Code	101A	301A	302A	501A	701A
<b>EXTERIOR (continued)</b>						
<b>Wheels – DRW</b>						
16" Heavy-Duty Forged Aluminum Wheel (Heavy-Duty Front Axle configurations only). Available with Exterior Upgrade Package – DRW (Heavy-Duty Front Axle configurations only) (18L). – <b>Late Availability</b>	76G	O	O	O	P/O	P/O
<b>Wheels – Spare Tire</b>						
Spare Tire and Wheel <b>Note:</b> Includes 3 ton jack, tool kit and full-size matching tire	51D	O	S	S	O	O
<b>Note:</b> Removes Tire Inflator and Sealant Kit	51A	S	O	O	S	S
★ Spare Tire and Wheel Delete	51A	S	O	O	S	S
★ Tire Inflator and Sealant Kit Delete	57A	O	S	S	S	S
<b>Windows (Refer to the Windows Offering Chart on page for complete window details)</b>						
Fixed Rear Cargo Door Glass. Includes Rear-window Defroster. <b>Note:</b> For Mid/High roof cargo variants, (92E) Privacy Glass is included with (17A) Rear Glass. Solar tinted glass (non-privacy) remains standard on Low Roof Variants.	17A	O	—	—	—	S
Fixed Rear Cargo Door Glass and Fixed 2 <sup>nd</sup> row Passenger-side Glass. Includes Rear-window Defroster. <b>Note:</b> For Mid/High roof cargo variants, (92E) Privacy Glass is included with (17B) Rear Glass. Solar tinted glass (non-privacy) remains standard on Low Roof Variants.	17B	O	—	—	—	—
Windows-All-Around, Fixed. Includes Rear-window Defroster. <b>Note:</b> For Mid/High roof cargo and Passenger Van variants, (92E) Privacy Glass is included with (17F) Rear Glass. Solar tinted glass (non-privacy) remains standard on Low Roof Variants.	17F	O	S	S	—	—
<b>Glass</b>						
★ High Strength Laminated Glass. Optional on both Gas and Electric Medium/High Roof Cargo Van. Not available on Low Roof. Available with Windows-All-Around, Fixed (17F) only <b>Note:</b> High strength laminated glass applies to 2 <sup>nd</sup> -4 <sup>th</sup> row windows. This option provides a pathway to FMVSS 226 compliance. <b>Note:</b> Not compatible with Extended Wheelbase variants (W3X/W3U)	92A	O	—	—	—	—
Privacy Glass. Includes Rear-window Defroster. Included when 17A/B/F (includes Rear Door Glass) is selected on all Medium and High Roof variants: Optional on Low Roof variants.	92E	I/O	I/O	I/O	—	—
<b>INTERIOR</b>						
B-Pillar Assist Handle (Passenger-side) <b>Note:</b> Handle is standard on Low Roof Cargo Van	41B	S/O	S	S	—	—
D-Pillar Assist Handles <b>Note:</b> Located on the Driver and Passenger-side. Due to space requirements, the Driver-side handle is deleted if Front/Rear Aux A/C and Heater (Driver controlled) (57G) is also ordered. <b>Note:</b> Not Available with Optional Shelving Packages	66C	O	—	—	—	—
Large Grab Handles Kit (2 D-pillars). Regular and Long and Extended Length only. Includes high visibility, textured yellow coating Not available with D-pillargrab handle (66C). Refer to the Legend® Interior Options page for more details.	60F	O	—	—	—	—
Rearview Mirror. Included with rear glass window configurations (17A, 17B, and 17F).	90B	I	S	S	O	S
Digital Rearview Mirror. Placed in the traditional rearview mirror mount location, this always on, auto-dimming enhanced mirror provides full digital rearview images when obstructions such as a bulkhead, cargo or no rear windows are present. Returns to mirror mode when the camera is turned off. Not available with Low Roof. <b>Note:</b> This is not a reverse back-up camera.	90C	O	O	O	—	—
Full Rear Compartment Lighting. Includes cargo area LED lights at C-pillar, D-pillar and mid-ship (EL-WB only). Rear Compartment LED Switch is only included on Cargo Van.	15F	O	S	S	—	—
Cargo Tie-Down Hooks (Cargo Van: 6 tie-down hooks)	17P	O	—	—	—	—

★ = New for this model year

S = Standard / O = Optional / P = Packaged Option / F = Fleet Option  
with valid FIN code / I = Included

# 2026 TRANSIT OPTIONAL EQUIPMENT

BODY CODES	Body Type	CARGO VAN	PASSENGER VAN XL	PASSENGER VAN XLT	CUTAWAY	CHASSIS CAB
	Order Code	101A	301A	302A	501A	701A
<b>INTERIOR (continued)</b>						
Front Overhead Shelf. Not available on Low Roof Cargo or Passenger Van.	66D	O	O	O	O	O
<b>Bulkheads</b>						
Bulkhead – Lockable Door with Window. Optional only on Medium Roof and High Roof. Includes B-Pillar Assist Handle (41B). <b>Note:</b> The bulkhead is located behind the driver and passenger seats in the Cargo Van, and separates them from the cargo area. Recommended for E-Transit. See Partition Options page for more details.	47T	O	—	—	—	—
Bulkhead – Window Only. Optional only on Low Roof and Medium Roof. Includes B-Pillar Assist Handle (41B). <b>Note:</b> The bulkhead is located behind the driver and passenger seats in the Cargo Van, and separates them from the cargo area. Recommended for E-Transit. See Partition Options page for more details.	47U	O	—	—	—	—
<b>Shelving and Vocational/Trade Packages</b>						
Fixed Shelving, multi-level – passenger side only. Requires a Bulkhead option (47T or 47U). Available with Regular and Long Length Cargo Vans. Not available with Load Area Protection Package (96D), Windows-All-Around (17F), Front/Rear Aux A/C and Heater (57G), D-Pillar Assist Handles (66C), or Pro Power Onboard™ – 2.4kW (90E). <b>Note:</b> See Shelving Options page(s) for more details	66F	O	—	—	—	—
Fixed Shelving, multi-level – driver side only. Requires a Bulkhead option (47T or 47U). Available with Regular and Long Length Cargo Vans. Not available with Interior Upgrade Package (96C), Load Area Protection Package (96D), Windows-All-Around (17F), Front/Rear Aux A/C and Heater (57G) or D-Pillar Assist Handles (66C). <b>Note:</b> See Shelving Options page(s) for more details	66E	O	—	—	—	—
Foldable Aluminum Shelving, two levels per side. Requires Bulkhead – Lockable Door with Window (47T). Requires Heavy Duty Cargo Flooring (60B). Available with Medium or High Roof, Long and Extended Lengths. Not available with Load Area Protection Package (96D), D-Pillar Assist Handles (66C), Windows-All-Around (17F) Pro Power Onboard™ – 2.4kW (90E), Front/Rear Aux A/C and Heater (57G). <b>Note:</b> See Shelving Options page(s) for more details	66H	O	—	—	—	—
Fixed Shelving, multi-level – driver and passenger sides. Requires a Bulkhead option (47T or 47U). Available with Regular and Long Length Cargo Vans. Not available with Load Area Protection Package (96D), D-Pillar Assist Handles (66C), Windows-All-Around (17F), Front/Rear Aux A/C and Heater (57G) or Pro Power Onboard™ – 2.4kW (90E). <b>Note:</b> See Shelving Options page(s) for more details	66J	O	—	—	—	—
Electrician Trade Package (Based on fixed shelving) Requires a Bulkhead option (47T or 47U). Available with Regular, Long and Extended Length Cargo Vans. Not available with Load Area Protection Package (96D), D-Pillar Assist Handles (66C), Windows-All-Around (17F), Front/Rear Aux A/C and Heater (57G) or Pro Power Onboard™ – 2.4kW (90E) <b>Note:</b> See Shelving Options page(s) for more details.	66K	O	—	—	—	—

★ = New for this model year

S = Standard / O = Optional / P = Packaged Option / F = Fleet Option  
with valid FIN code / I = Included

# 2026 TRANSIT OPTIONAL EQUIPMENT

BODY CODES	Body Type Order Code	CARGO VAN	PASSENGER VAN XL	PASSENGER VAN XLT	CUTAWAY	CHASSIS CAB
		101A	301A	302A	501A	701A
<b>INTERIOR (continued)</b>						
HVAC Trade Package Requires a Bulkhead option (47T or 47U). Available with Regular, Long and Extended Length Cargo Vans. Not available with low roof variants or Load Area Protection Package (96D), D-Pillar Assist Handles (66C), Windows-All-Around (17F), Front/Rear Aux A/C and Heater (57G) or Pro Power Onboard™ – 2.4kW (90E) (Based on fixed shelving). <b>Note:</b> See Shelving Options page(s) for more details <b>Note:</b> Low Roof Variant Late Availability	66L	O	—	—	—	—
General Contractor Trade Package Requires a Bulkhead option (47T or 47U). Available with Regular, Long and Extended Length Cargo Vans. Not available with Load Area Protection Package (96D), D-Pillar Assist Handles (66C), Windows-All-Around (17F), Front/Rear Aux A/C and Heater (57G) or Pro Power Onboard™ – 2.4kW (90E) (Based on fixed shelving). <b>Note:</b> See Shelving Options page(s) for more details	66M	O	—	—	—	—
<b>Center Console</b> Large Center Console. Included with Upfitter Package (67C) and Trailer Brake Controller (67D). Not available with E-Transit. <b>Note:</b> Includes an integrated shifter, a dual cup holder and an additional storage area	67E	O/I	O/I	S	O/I	O/I
<b>Floor Covering</b> Vinyl, Front only. Included with the Builders Prep Package (47E) for Passenger Van XL. <b>Note:</b> Wheel Well Liners and Scuff Plates Kit are not included.	16C	S	I	—	S	S
Vinyl, Front and Rear. Included in Load Area Protection Package (96D). Not available with Front/Rear Aux A/C and Heater (Driver controlled) (57G) on Cargo Van, Heavy-Duty Cargo Flooring (60B) or Heavy-Duty Scuff Plate Kit (85B). <b>Note:</b> Wheel Well Liners are included as part of the rear vinyl floor covering.	16E	O/I	S	O	—	—
Heavy-Duty Load Floor and Scuff Plate Protection Package. Includes ½ inch thick composite polyethylene anti-slip surface and Heavy-Duty Scuff Plate Kit (85B). Not available with Vinyl, Front and Rear (16E) – Cargo Van only or Front/Rear Aux A/C and Heater (Driver controlled) (57G). Refer to the Legend® Interior Options page for more details.	60B	O	—	—	—	—
Carpet, Front only. Included with Builders Prep Package (47E). Not available with E-Transit. <b>Note:</b> Deletes all rear floor covering.	16G	O	—	I	O	O
Carpet, Front and Rear	16H	—	O	S	—	—
<b>Seating – Front</b> Dark Palazzo Gray Cloth, 2-way manual Driver and 2-way manual Passenger seats. Cargo Van and Chassis Cab are only available with 11,000lb GVWR configurations Not available with E-Transit. <b>Note:</b> Reference Seat Matrix on page 20 for compliance details and restrictions	21C	O	—	—	O	O
Dark Palazzo Gray Vinyl, 2-way manual Driver and 2-way manual Passenger seats with Driver seat armrest only.	21G	S	O	—	S	S
Passenger Seat Delete Dark Palazzo Gray Vinyl, 2-way manual Driver seat. Cargo Van is only available with 11,000lb GVWR configurations Includes Auxiliary Fuse Panel (87E). <b>Note:</b> Reference Seat Matrix on page 20 for compliance details and restrictions	21J	O	—	—	O	—
Passenger Seat Delete Dark Palazzo Gray Cloth, 2-way manual Driver seat. <b>Note:</b> Reference Seat Matrix on page 20 for compliance details and restrictions	21K	O	—	—	O	—
Dark Palazzo Gray Cloth, 2-way manual Driver and 2-way manual Passenger seats.	21L	O	S	—	O	O

★ = New for this model year

S = Standard / O = Optional / P = Packaged Option / F = Fleet Option  
with valid FIN code / I = Included

# 2026 TRANSIT OPTIONAL EQUIPMENT

BODY CODES	Body Type	CARGO VAN	PASSENGER VAN XL	PASSENGER VAN XLT	CUTAWAY	CHASSIS CAB
	Order Code	101A	301A	302A	501A	701A
<b>INTERIOR (continued)</b>						
★ Dark Palazzo Gray Cloth, 2-way manual Driver heated (with lumbar), 2-way manual Passenger heated seats with Driver and Passenger seat armrests.	21M	O *S on E-Transit	--	S	O *S on E-Transit	O *S on E-Transit
Dark Palazzo Gray Vinyl, 2-way manual Driver and 2-way manual Passenger seats with Driver and Passenger seat armrests.	21P	O	O	—	O	O
Dark Palazzo Gray Cloth, 10-way power heated Driver and 10-way power heated Passenger seats. Not available with E-Transit.	21Q	O	—	O	O	O
Dark Palazzo Gray Cloth, 4-way manual swivel Driver and 4-way manual swivel Passenger seats. Includes Dual AGM Batteries (63E). Not available on E-Transit, or with 9,950lb DRW GVWR configurations.	21T	O	—	—	O	—
Dark Palazzo Gray Cloth, 4-way manual swivel Driver and 4-way manual swivel Passenger seats. Includes Dual AGM Batteries (63E). Not available with E-Transit or 9,950lb DRW GVWR Cutaway configurations. Cargo Van is only available with 11,000lb GVWR configurations. <b>Note:</b> Reference Seat Matrix on page 20 for compliance details and restrictions	218	O	—	—	O	—
Ebony Cloth, 2-way manual Driver and 2-way manual Passenger seats without armrests.	219	O	—	—	O	—
Passenger Seat Delete Ebony Cloth, 2-way manual Driver seat without an armrest. <b>Note:</b> Reference Seat Matrix on page 20 for compliance details and restrictions <b>Note:</b> Not available with Ambulance Prep Package (47B).	211	—	—	—	O	—
<b>Passenger Van Seating – Rear</b>						
1-Passenger and 2-Passenger Seating. 2-Passenger Seating is standard on Cargo Van, Cutaway and Chassis Cab, except when Passenger Seat Delete (21J, 21K and 211) is ordered, then it's 1-Passenger Seating. 2-Passenger Seating is standard on Passenger Van with Builders Prep Package (47E). 2-Passenger Seating (with additional rear seat attachment points) is optional on Passenger Van without Builders Prep Package (47E). <b>Note:</b> 13 rear seats are removed, but seat attachment points are still present. This note only applies to 2-Passenger Seating on Passenger Van without Builders Prep Package (47E).	96K	S	S/O	S/O	S	S
15-Passenger Seating. 1 <sup>st</sup> row: 2 seats, 2 <sup>nd</sup> row: 3 seats, 3 <sup>rd</sup> row: 3 seats, 4 <sup>th</sup> row: 3 seats, 5 <sup>th</sup> row: 4 seats. Optional with Long Length Passenger Van.	96P	—	O	O	—	—
<b>FUNCTIONAL</b>						
Auxiliary Fuse Panel with High Spec Interface Connector. Includes Dual AGM Batteries (63E) and Modified Vehicle Wiring System (53K) Included with Passenger Seat Delete Options 21J, 21K, 211. <b>Note:</b> Requires Rear Seat Delete (96K) on 301A & 302A	87E	O/I	O/I*	O/I*	O/I	O/I
Dual Alternator (250 amps each). Includes Auxiliary Fuse Panel with High Spec Interface Connector (87E). Included with Ambulance Prep Packages (47B). Includes Pro Power Onboard™ – 400 W(90D) on Cargo Van, Cutaway and Chassis Cabs without Push Down Manual Parking Brake (90G) or 11,000lb GVWR. Not available with the 3.5L PFDi V6 (998) engine, Passenger Seat Delete (21J / 21K / 211), or E-Transit.	63C	O/I	—	—	O	O
Keyless Entry Keypad	52C	O	O	O	—	O
Modified Vehicle Wiring System. Included with Builders Package (47E), Ambulance Prep Package – Cargo Van (47B), RV Prep Package (47D) and Auxiliary Fuse Panel with High Spec Interface Connector (87E). Requires Dual AGM Batteries (63E) on Cargo Van and Passenger Van.	53K	O/I	O/I	O/I	S	S

★ = New for this model year

S = Standard / O = Optional / P = Packaged Option / F = Fleet Option  
with valid FIN code / I = Included

# 2026 TRANSIT OPTIONAL EQUIPMENT

BODY CODES	Body Type	CARGO VAN	PASSENGER VAN XL	PASSENGER VAN XLT	CUTAWAY	CHASSIS CAB
	Order Code	101A	301A	302A	501A	701A
<b>FUNCTIONAL (continued)</b>						
Intelligent Access with push-button start. Also referred to as Passive Entry/Passive Start (PEPS). This feature allows the user to enter the vehicle without the need of the key. Likewise the vehicle can be started via push button without a key and with the FOB in the presence of the user. NOTE: This feature will be included with Close Assist (43H) and is standard on Mid/High Roof XLT Passenger Van and all Mid/High Roof E-Transits (EV). <b>Note:</b> Late Availability on Low Roof Cargo Van Variants.	85L	O// S on E-Transit	O	S/O O on Low-Roof Only	O/ S on E-Transit	O/ S on E-Transit
Manual Parking Brake Lever. Standard with 11,000lb GVWR configurations and optional on Cargo Van and Cutaway DRW, except 11,000lb GVWR. Not available with Pro Power Onboard™ – 400 W (90D). <b>Note:</b> The conventional manual parking brake lever feature allows the driver to push the hand lever to the fully down position, while the parking brake remains engaged. This is particularly useful in situations where additional clearance to pass over the parking brake lever is necessary, such as a swivel seat.	90G	S/O	—	—	S/O	S
<b>Air Conditioning</b> Front/Rear Aux A/C and Heater (Driver controlled). Not available with E-Transit, and Passenger Seat Delete (21J, 21K), Cargo Van with Vinyl, Front and Rear (16E) or Load Area Protection Package (96D). Requires Full-Size Spare Tire (51D). <b>Note:</b> Heat is distributed from rear of front-passenger seat. A/C is distributed from the rear of van.	57G	O	S	S	—	—
<b>Audio – Speakers</b> 6 speakers (4 front/2 rear). <b>Note:</b> Rear speakers shipped in dunnage box for Cutaway only.	91L	O	—	—	O	—
<b>Axle</b> Heavy-Duty Front Axle. Not available with E-Transit. <b>Note:</b> Up to 4,630 lb FGAWR. Refer to the Axle Availability charts beginning on page for complete option details.	41E	S/O	S/—	S/—	S/O	S/O
<b>Batteries</b> Dual AGM Batteries. (70 amp-hr each). Included with Pro Power Onboard™ – 400 W (90D), Auxiliary Fuse Panel with High Spec Interface Connector (87E), and the combination of X9C, X9X or X9Y and 15-Passenger Seating <b>Note:</b> On E-Transit, Dual AGM Batteries not compatible with Dual Onboard Charger (65C).	63E	O/I	O/I	O/I	O/I	O/I
<b>E-Transit Charging/Battery</b>						
Dual Onboard battery charger	65C	O *E-Transit Only	—	—	O *E-Transit Only	O *E-Transit Only
★ Mobile Power Cord and Fast Charging Adapter (NACS) Bundle (120V/240V). Available only on E-Transit. <b>Note:</b> Switchable cord end to allow customer charge functionality with 120V (NEMA 5-15) up to 15 Amps or 240V (NEMA 14-50) up to 32 Amps <b>Note:</b> Adapter to access DC fast charging stations using the North American Charging Standard (NACS)	98A	O *E-Transit Only	—	—	O *E-Transit Only	O *E-Transit Only
<b>Driver Assist Package Upgrades (see packages below)</b>						
★ Ford Co-Pilot360® Assist 2.0: for Cargo and Passenger Van: Refer to the Packaged Options section for more details.	61M	O	O	S	—	—
★ Ford Co-Pilot360® Assist+ for Chassis Cab/Cutaway: Refer to the Packaged Options section for more details. <b>Note:</b> Not applicable with Right Hand Door Delete (60X)	61L	—	—	—	O	O
<b>Heating</b> Engine Block Heater (400W Rating). Not available with E-Transit. <b>Note:</b> Recommended when minimum temperature is 10°F or below.	41H	O	O	O	O	O

★ = New for this model year

S = Standard / O = Optional / P = Packaged Option / F = Fleet Option  
with valid FIN code / I = Included

# 2026 TRANSIT OPTIONAL EQUIPMENT

BODY CODES	Body Type Order Code	CARGO VAN	PASSENGER VAN XL	PASSENGER VAN XLT	CUTAWAY	CHASSIS CAB
		101A	301A	302A	501A	701A
<b>FUNCTIONAL (continued)</b>						
<b>Interior Power</b>						
Pro Power Onboard™ – 400 W Includes Dual AGM Batteries (63E). Included with Dual Alternator (63C) on vehicles without Push Down Manual Parking Brake (90G), or 11,000lb GVWR. Not available with E-Transit, Passenger Seat Delete (21J, 21K and 211), Front/Rear Aux A/C, Heater (Driver controlled) (57G), 11,000lb GVWR configurations or Push Down Manual Parking Brake (90G). Requires Full-Size Spare Tire on Cargo Van (51D). <b>Note:</b> High-power outlets deliver up to 400 watts of power, allowing drivers to easily charge smaller corded tools, battery chargers or mobile devices on-site.	90D	O	—	—	O	O
★ Ford Connectivity Package (One-time Purchase – 7 Years)* Ford Connectivity Package includes (features may vary by make and model): • Unlimited Wi-Fi® Hotspot • Connected Navigation (requires Ford Co-Pilot360® Assist+ (61L) or Ford Co-Pilot360® Assist 2.0 (61M) package) • Audio and Video Streaming • Voice Assistant • Entertainment <b>Note:</b> Select option for a one-time purchase of Ford Connectivity Package. Ford Connectivity Package will be active for 7 years on this vehicle (non-transferrable to another VIN) from warranty start date. Requires activation via Ford app. Not available for fleet orders. Evolving technology/cellular networks/vehicle capability may limit functionality and prevent operation of connected features. Ford may temporarily slow data speeds if such data usage reaches or exceeds 50GB within a billing cycle or due to network limitations. If a customer uses more than 50% of their data usage in a roaming country during a 60-day period, Ford may remove or limit the customer's data plan.	59D	O	O	O	O	O
Pro Power Onboard™ – 2.4kW . Includes 12V Powerpoint on Cargo Van configurations. For Cutaway and Chassis Cab configurations, an auxiliary outlet and harness will be supplied in vehicle dunnage. Placement, connection and configuration (requires FDRS tool) of the aux outlet is the responsibility of the final stage manufacturer. . Only available on E-Transit. <b>Note:</b> Pro Power Onboard™ allows the vehicle to be used as a power source for tools to be plugged in to. System contains (2) three-prong outlets on passenger side near the rear cargo doors.	90E	O *E-Transit Only	—	—	O *E-Transit Only	O *E-Transit Only
<b>Upfitter Accessories</b>						
Upfitter Package. Includes High Capacity Upfitter Switches, Large Center Console (67E) and Auxiliary Fuse Panel with High Spec Interface Connector (87E). Not available with E-Transit	67C	O	O	O	O	O
★ Vehicle Integration System 2.0. <b>Note:</b> This technology is recommended for any application that will utilize upfit aftermarket equipment. Upfitter FIN code required to program the module. Available with both gas and electric variants.	55A	O	O	—	S	S
<b>SAFETY/SECURITY</b>						
<b>Keys</b> Keys: 2 additional (4 total) with key fobs.	86F	O	O	O	O	O
<b>PACKAGES/KITS</b>						
<b>Exterior Prep Packages</b>						
Exterior Upgrade Package – SRW. Included in Shuttle Bus Prep Package (47S). Not available on E-Transit.	18D	O	—	S	O/I	O
Exterior Upgrade Package – DRW. Included in Shuttle Bus Prep Package (47S).	18L	O	—	S	O/I	O

★ = New for this model year

S = Standard / O = Optional / P = Packaged Option / F = Fleet Option  
with valid FIN code / I = Included

# 2026 TRANSIT OPTIONAL EQUIPMENT

BODY CODES	Body Type	CARGO VAN	PASSENGER VAN XL	PASSENGER VAN XLT	CUTAWAY	CHASSIS CAB
	Order Code	101A	301A	302A	501A	701A
<b>PACKAGES/KITS (continued)</b>						
<b>Heating Prep Packages</b>						
Auxiliary Heater / AC Prep Package without Rear Controls. Available with Builders Prep Package (47E). Not available with Front/Rear Aux A/C and Heater (Driver controlled) (57G) or with E-Transit. <b>Note:</b> Package includes stub lines for delivery of coolant/refrigerant for easy addition of an aftermarket rear heater and A/C system. Requires aftermarket upfit of a climate control system.	62C	O	P	P	O	O
<b>Interior Prep Packages</b>						
Interior Upgrade Package – Cutaway/Chassis Cab. Refer to the Packaged Options section for more details.	47A	—	—	—	O	O
<b>Cargo Area Trim Packages</b>						
Load Area Protection Package. Refer to the Packaged Options section for more details. <b>Note:</b> Includes complete 4mm rear polypropylene panels on side walls and doors. Includes Vinyl, Front and Rear Floor (16E).	96D	O	—	—	—	—
Heavy-Duty Wall Liner Kit (includes 6mm thick walls, roof, doors, motion lighting, additional NVH insulation, wheel well covers). Available in Regular, Long Length and Extended Length.. Requires Bulkhead (47T or 47U). Not compatible with glass options 17A/B/F. Refer to the Legend® Interior Options page for more details	96E	O	—	—	—	—
Heavy-Duty Scuff Plate Kit. Not available with the Vinyl, Front and Rear Floor Covering (16E), Load Area Protection Package (96D) unless ordered with Heavy-Duty Cargo Flooring (60B). <b>Note:</b> Heavy-duty scuff plate kit is made of durable 14 gauge steel heavy-duty scuffs for rear cargo doors and Sliding Passenger-side Door. Refer to the Legend® Interior Options page for more details.	85B	O/I	—	—	—	—
<b>Miscellaneous Prep Packages</b>						
Ambulance Prep Package – Cargo Van. Refer to the Packaged Options section for more details.	47B	O	—	—	—	—
Builder's Prep Package. Refer to the Packaged Options section for more details.	47E	—	O	O	—	—
Livery Package (Livery FIN required). Refer to the Packaged Options section for more details	47L	—	—	O	—	—
Motorhome Prep Package. Refer to the Packaged Options section for more details.	47M	—	—	—	O	—
Shuttle Bus Prep Package. Refer to the Packaged Options section for more details.	47S	—	—	—	O	—
RV Prep Package. Refer to the Packaged Options section for more details.	47D	O	—	—	—	—
Parcel Delivery Package. Refer to the Packaged Options section for more details.	47G	O	—	—	O	—
<b>FORD ACCESSORIES</b>						
Back Up Alarm. <b>Note:</b> The back up alarm has 97 dB(A) warning capability.	43B	O	O	O	O	O
White Noise Back Up Alarm. Not available with Back Up Alarm (43B). Available with E-Transit only. <b>Note:</b> The back up alarm has 87 dB (+/-4) warning capability.	63G	O	—	—	O	O
Heavy Duty Tray Style Floor Mats (Front). Only available with carpet floor covering (16G/16H).	86N	O	O	O	O	O
All-Weather Floor Mats (Front). Available with vinyl floor covering (16C and 16E).	86W	O	O	O	O	O
Remote Start. Not available with E-Transit.	68B	O	O	O	O	O
Wheel Well Liners – Black (Standard on AWD; Optional on RWD; Front only)	15C	S/O	S/O	S/O	S/O	S/O
<b>FLEET ORDERS ONLY OPTIONS (Requires Valid FIN or Dealer Code)</b>						
Daytime Running Lamps <b>Note:</b> Provide enhanced vehicle visibility during daylight conditions.	942	F	F	F	F	F
Exterior Mirror Delete Only available with Less Trim Pkg and Wall Liner Kit (96E)	54X	F	—	—	—	—
Multi-Function School Activity Bus (MFSAB) Prep Package. Refer to the Packaged Options section for more details.	47Q	—	—	—	F	—

★ = New for this model year

S = Standard / O = Optional / P = Packaged Option / F = Fleet Option  
with valid FIN code / I = Included

# 2026 TRANSIT OPTIONAL EQUIPMENT

BODY CODES	Body Type	CARGO VAN	PASSENGER VAN XL	PASSENGER VAN XLT	CUTAWAY	CHASSIS CAB
	Order Code	101A	301A	302A	501A	701A
<b>FLEET ORDERS ONLY OPTIONS (Requires Valid FIN or Dealer Code) (continued)</b>						
Orange Safety Belts. Not available with 10-way power seat (21Q), or swivel seat (21T and 218). <b>Note:</b> Belt minder is included on the front driver and passenger seat(s).	76C	F	—	—	F	F
School Bus Prep Package. Refer to the Packaged Options section for more details.	47C	—	—	—	F	—
<b>Decal Options (Refer to the Decal Options on page 28 for complete details)</b>						
Decal #1 – Up to 15 ft <sup>2</sup> .	51E	F	F	F	—	—
Decal #2 – Up to 30 ft <sup>2</sup> .	51F	F	F	F	—	—
<b>Speed Limiting Device</b>						
65-mph Governed Top Speed. Included with E-Transit Cutaway and Chassis Cab	52M	F	F	F	F/I	F/I
70-mph Governed Top Speed (Not available on E-Transit Cutaway and Chassis Cab)	52H	F	F	F	F	F
Fleet Safety Package. Refer to the Packaged Options section for more details.	59C	F	F	F	F	F
Fleet Fuel Economy Package Refer to the Packaged Options section for more details.	98B	F	F	F	F	F
<b>Smart Acceleration Truncation</b>						
Smart Acceleration Truncation can help fleet managers improve driver behavior by limiting acceleration speeds based on auto-calculation of payload, enabling a smooth start after every stop, regardless of load or driver skill. This can help improve energy usage by limiting power on unladen vehicles.	62B	F	F	F	F	F
<b>Automatic Engine Idle Shutdown</b>						
Engine Idle Shutdown 3 Minute Timer	58M	F	F	F	F	F
Engine Idle Shutdown 5 Minute Timer	58E	F	F	F	F	F
Engine Idle Shutdown 10 Minute Timer	55F	F	F	F	F	F
Engine Idle Shutdown 20 Minute Timer	55H	F	F	F	F	F

★ = New for this model year

S = Standard / O = Optional / P = Packaged Option / F = Fleet Option  
with valid FIN code / I = Included

# 2026 TRANSIT OPTIONAL EQUIPMENT

<div style="display: flex; flex-direction: column; gap: 5px;"> <div><span style="display: inline-block; width: 15px; height: 10px; background-color: #4F81BD; border: 1px solid black;"></span> = Standard Glass</div> <div><span style="display: inline-block; width: 15px; height: 10px; border: 1px solid black;"></span> = Door without Glass</div> <div><span style="display: inline-block; width: 15px; height: 10px; background-color: #E31A1C; border: 1px solid black;"></span> = Fixed Glass Option</div> </div>	<b>2026 Transit - Window Offerings</b>		
	SINGLE REAR WHEEL		DUAL REAR WHEEL
	LOW ROOF	MEDIUM & HIGH ROOF	HIGH ROOF
	Sliding Passenger-side Door	Sliding Passenger-side Door (Privacy Glass (92E) Included)	Sliding Passenger-side Door (Privacy Glass (92E) Included)
<b>No Rear Glass</b> Standard on Cargo Vans  Side Door Glass: No Rear Door Glass: No Bodyside Glass: No			
<b>Fixed Rear Cargo Door Glass</b> Optional on Cargo Van.  Side Door Glass: No Rear Door Glass: Yes Bodyside Glass: No Rear Defroster: Yes			
<b>Fixed Rear Cargo Door Glass and Fixed Passenger-side Glass</b> Optional on Cargo Van.  Side Door Glass: Yes Rear Door Glass: Yes Bodyside Glass: No Rear Defroster: Yes			
<b>Windows-All-Around, Fixed</b> Optional on Cargo Van. Standard/Optional on Passenger Van.  Side Door Glass: Yes Rear Door Glass: Yes Bodyside Glass: Yes Rear Defroster: Yes  Laminated Safety Glass (Optional)			

★ = New for this model year

DECAL OPTIONS



Decal#1 (51E)



Decal#2 (51F)

# 2026 TRANSIT OPTIONAL EQUIPMENT

## FRONT SEAT MATRIX

Order Code	Seat Pack #	Color	Material	Driver Seat Control	Passenger Seat Control	Single Passenger Seat	Driver Heated Seat	Passenger Heated Seat	Driver Lumbar Support	Passenger Lumbar Support	Driver Armrest	Passenger Armrest	2-Way Adjustable Headrest
21C	2	Dark Palazzo Gray	Cloth	2-Way Manual	2-Way Manual	Yes	No	No	Yes	No	Yes	Yes	Yes
21G	6	Dark Palazzo Gray	Vinyl	2-Way Manual	2-Way Manual	Yes	No	No	No	No	Yes	No	Yes
21L	10	Dark Palazzo Gray	Cloth	2-Way Manual	2-Way Manual	Yes	No	No	Yes	No	Yes	Yes	Yes
21M	11	Dark Palazzo Gray	Cloth	2-Way Manual	2-Way Manual	Yes	Yes	Yes	Yes	No	Yes	Yes	Yes
21P	13	Dark Palazzo Gray	Vinyl	2-Way Manual	2-Way Manual	Yes	No	No	No	No	Yes	Yes	Yes
21Q	14	Dark Palazzo Gray	Cloth	10-Way Power	10-Way Power	Yes	Yes	Yes	Yes	Yes	Yes	Yes	Yes
21T	17	Dark Palazzo Gray	Cloth	4-Way Manual Swivel Seat	4-Way Manual Swivel Seat	Yes	No	No	Yes	No	Yes	Yes	Yes
218	31	Dark Palazzo Gray	Cloth	4-Way Manual Swivel Seat	4-Way Manual Swivel Seat	Yes	No	No	Yes	No	Yes	Yes	Yes
219	32	Ebony	Cloth	2-Way Manual	2-Way Manual	Yes	No	No	Yes	No	No	No	Yes
211	33	Ebony	Cloth	2-Way Manual	No	No	No	No	No	No	No	No	Yes
21J	34	Dark Palazzo Gray	Vinyl	2-Way Manual	No	No	No	No	No	No	Yes	No	Yes
21K	35	Dark Palazzo Gray	Cloth	2-Way Manual	No	No	No	No	Yes	No	Yes	No	Yes

## FRONT SEAT MATRIX CONTINUED

Order Code	Seat Pack #	Color	Material	Driver Beltminder System	Passenger CRS Top Tether Anchorage	Driver Front Airbag	Passenger Front Airbag	Driver Thorax Airbags	Passenger Thorax Airbags	Driver Curtain Airbags (Front Only)	Passenger Curtain Airbags (Front Only)	Driver Curtain Airbags (Front and Rear)	Passenger Curtain Airbags (Front and Rear)
21C	2	Dark Palazzo Gray	Cloth	Yes	Yes	Yes	Yes	No	No	No	No	No	No
21G	6	Dark Palazzo Gray	Vinyl	Yes	Yes	Yes	Yes	Yes	Yes	Yes	Yes	Yes <sup>1</sup>	Yes <sup>1</sup>
21L	10	Dark Palazzo Gray	Cloth	Yes	Yes	Yes	Yes	Yes	Yes	Yes	Yes	Yes <sup>1</sup>	Yes <sup>1</sup>
21M	11	Dark Palazzo Gray	Cloth	Yes	Yes	Yes	Yes	Yes	Yes	Yes	Yes	Yes <sup>1</sup>	Yes <sup>1</sup>
21P	13	Dark Palazzo Gray	Vinyl	Yes	Yes	Yes	Yes	Yes	Yes	Yes	Yes	Yes <sup>1</sup>	Yes <sup>1</sup>
21Q	14	Dark Palazzo Gray	Cloth	Yes	Yes	Yes	Yes	Yes	Yes	Yes	Yes	Yes <sup>1</sup>	Yes <sup>1</sup>
21T	17	Dark Palazzo Gray	Cloth	Yes	Yes	Yes	Yes	Yes	Yes	Yes	Yes	No	No
218	31	Dark Palazzo Gray	Cloth	Yes	Yes	Yes	Yes	No	No	No	No	No	No
219	32	Ebony	Cloth	Yes	Yes	Yes	Yes	Yes	Yes	Yes	Yes	No	No
211	33	Ebony	Cloth	Yes	No	Yes	No	No	No	No	No	No	No
21J	34	Dark Palazzo Gray	Vinyl	Yes	No	Yes	No	No	No	No	No	No	No
21K	35	Dark Palazzo Gray	Cloth	Yes	No	Yes	No	Yes	No	Yes	Yes	No	No

<sup>1</sup> Contains Driver and Passenger Curtain Airbags (Front and Rear) when a Passenger Van XL or Passenger Van XLT is selected.

★ New for 2026

## 2026 TRANSIT OPTIONAL EQUIPMENT

### REAR SEAT MATRIX

Order Code	Seat Pack #	Passenger Seating	Second Row Seating	Third Row Seating	Fourth Row Seating	Fifth Row Seating	Rear Seat Center Armrest	Second Row Double Seat (D)	Second Row Triple Narrow Seat (K)	Second Row Triple Wide Seat (C)
96K	Less	1 or 2 <sup>1,2</sup>	No	No	No	No	No	N/A	N/A	N/A
		12	Yes	Yes	Yes	No	No <sup>3</sup>	No	Yes	No
96P	6	15	Yes	Yes	Yes	Yes	No <sup>3</sup>	No	Yes	No

### REAR SEAT MATRIX CONTINUED

Order Code	Seat Pack #	Passenger Seating	Third Row Single/Double Seat (D+F)	Third Row Triple Wide Seat (C)	Fourth Row Single/Double Seat (D+Q)	Fourth Row Triple Wide Seat (C)	Fourth Row Double/Double Seat (J+J)	Fifth Row Single/Double/Single Seat (Y+X+Y)	Fifth Row Double/Double Seat (J+J)
96K	Less	1 or 2 <sup>1,2</sup>	N/A	N/A	N/A	N/A	N/A	N/A	N/A
		12	Yes	No	No	No	Yes	N/A	N/A
96P	6	15	Yes	No	Yes	No	No	Yes	No

<sup>1</sup> 2-Passenger Seats are standard on Cargo Van, Cutaway and Chassis Cab, except when Passenger Seat Delete (21J and 21K) is ordered, then it's 1-Passenger Seat. 2-Passenger Seats are standard on Passenger Van with Builders Prep Package (47E).

<sup>2</sup> Incomplete Vehicle; some rear seats are removed, but seat attachment points still exist

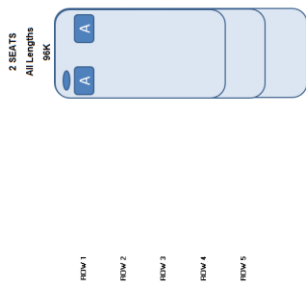
<sup>3</sup> Included on Passenger Van XLT

# OPTIONAL EQUIPMENT

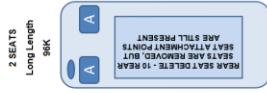
## SEATING CONFIGURATIONS

### 2026MY SEAT CONFIGURATIONS

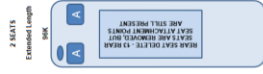
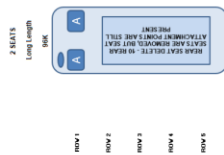
#### CARGO VAN, CUTAWAY & CHASSIS CAB



#### PASSENGER VAN (LOW ROOF)



#### PASSENGER VAN (MEDIUM ROOF AND HIGH ROOF)



- Seat Capacity
- 4
  - 3
  - 2
  - 2
  - 1
  - 1
  - 1
- Seat Types
- S Single Driver / Single Passenger
  - D Double Seat
  - J Double Seat
  - Q Single Seat
  - X Single Seat
  - Y Single Seat
- Legend
- FIXED SEAT
  - CUSTOMER REMOVABLE SEAT

★ = New for this model year

**2026 TRANSIT**  
**OPTIONAL EQUIPMENT**

**NOMINAL TONNAGE**  
**(CARGO VAN)**

<b>CARGO VAN</b>		<b>Series (T-xxx)</b>	<b>Drive Type</b>	<b>Nominal Tonnage<sup>1</sup></b>
<b>Low Roof</b>	<b>E1Y</b>	T-150	RWD	3/4
	<b>E2Y</b>	T-150	AWD	3/4
	<b>R1Y</b>	T-250	RWD	3/4
	<b>R2Y</b>	T-250	AWD	3/4
	<b>W1Y</b>	T-350	RWD	1
	<b>W2Y</b>	T-350	AWD	1
	<b>F1Y</b>	T-350HD	RWD	1
	<b>F2Y</b>	T-350HD	AWD	1
<b>Medium Roof</b>	<b>E1C</b>	T-150	RWD	3/4
	<b>E2C</b>	T-150	AWD	3/4
	<b>R1C</b>	T-250	RWD	3/4
	<b>R2C</b>	T-250	AWD	3/4
	<b>W9C</b>	T-350	RWD	1
	<b>W2C</b>	T-350	AWD	1
	<b>F7C</b>	T-350HD	RWD	1
	<b>F8C</b>	T-350HD	AWD	1
<b>High Roof</b>	<b>R1X</b>	T-250	RWD	3/4
	<b>R2X</b>	T-250	AWD	3/4
	<b>R3U</b>	T-250	AWD	3/4
	<b>R3X</b>	T-250	RWD	3/4
	<b>W1X</b>	T-350	RWD	1
	<b>W2X</b>	T-350	AWD	1
	<b>W3X</b>	T-350	RWD	1
	<b>W3U</b>	T-350	AWD	1
	<b>F5X</b>	T-350HD	RWD	1
	<b>F6X</b>	T-350HD	AWD	1
	<b>F7X</b>	T-350HD	RWD	1
	<b>F8X</b>	T-350HD	AWD	1
	<b>F4X</b>	T-350HD	RWD	1
	<b>F4U</b>	T-350HD	AWD	1
	<b>U8X</b>	T-350HD	RWD	1
	<b>U8U</b>	T-350HD	AWD	1

**2026 TRANSIT**  
**OPTIONAL EQUIPMENT**

**NOMINAL TONNAGE**  
**(PASSENGER VAN)**

<b>PASSENGER VAN</b>		<b>Series (T-xxx)</b>	<b>Drive Type</b>	<b>Nominal Tonnage<sup>1</sup></b>
<b>Low Roof</b>	<b>X2Y</b>	T-350	RWD	1/2
	<b>X9Y</b>	T-350	AWD	1/2
<b>Medium Roof</b>	<b>X2C</b>	T-350	RWD	1/2
	<b>X9C</b>	T-350	AWD	1/2
<b>High Roof</b>	<b>X2X</b>	T-350	RWD	1/2
	<b>X9X</b>	T-350	AWD	1/2
	<b>U4X</b>	T-350HD	RWD	1/2
	<b>U5X</b>	T-350HD	AWD	1/2

## OPTIONAL EQUIPMENT

### NOMINAL TONNAGE (CUTAWAY)

CUTAWAY		Series (T-xxx)	Drive Type	Nominal Tonnage <sup>1</sup>
Low Roof	<b>R5P</b>	T-250	RWD	3/4
	<b>R7P</b>	T-250	AWD	3/4
	<b>W5P</b>	T-350	RWD	1
	<b>W7P</b>	T-350	AWD	1
	<b>F6P</b>	T-350HD	RWD	1
	<b>F8P</b>	T-350HD	AWD	1
	<b>U6P</b>	T-350HD	RWD	1
	<b>U8P</b>	T-350HD	AWD	1

### NOMINAL TONNAGE (CHASSIS CAB)

CHASSIS CAB		Series (T-xxx)	Drive Type	Nominal Tonnage <sup>1</sup>
Low Roof	<b>R5Z</b>	T-250	RWD	3/4
	<b>R7Z</b>	T-250	AWD	3/4
	<b>W5Z</b>	T-350	RWD	1
	<b>W7Z</b>	T-350	AWD	1
	<b>F6Z</b>	T-350HD	RWD	1
	<b>F8Z</b>	T-350HD	AWD	1
	<b>U6Z</b>	T-350HD	RWD	1
	<b>U8Z</b>	T-350HD	AWD	1

# 2026 TRANSIT AXLE AVAILABILITY

## FRONT AXLE AVAILABILITY (CARGO VAN)

CARGO VAN		3.5L PFDi V6 (998)		3.5L EcoBoost® V6 (99G)		Electric Motor (E-Transit) (99M)	
		Standard Front Axle	Heavy-Duty Front Axle (41E)	Standard Front Axle	Heavy-Duty Front Axle (41E)	Standard Front Axle	Heavy-Duty Front Axle (41E)
Regular (130")	E1Y	S	O	S	O	-	-
	E2Y	-	S	-	S	-	-
Long (148")	E1Y	S	O	S	O	-	-
	E2Y	-	S	-	S	-	-
Regular (130")	R1Y	S	O	S	O	-	-
	R2Y	-	S	-	S	-	-
Long (148")	R1Y	S	O	S	O	-	-
	R2Y	-	S	-	S	-	-
Regular (130")	W1Y	S	O	S	O	S	-
	W2Y	-	S	-	S	-	-
Long (148")	W1Y	S	O/1 <sup>2,3</sup>	-	S	S	-
	W2Y	-	S	-	S	-	-
Long (148")	F1Y	-	S	-	S	-	-
	F2Y	-	S	-	S	-	-
Long (148")	E1C	S	O	S	O	-	-
	E2C	-	S	-	S	-	-
Long (148")	R1C	S	O	-	S	-	-
	R2C	-	S	-	S	-	-
Long (148")	W9C	S	O/1 <sup>1,2,3</sup>	-	S	S	-
	W2C	-	S	-	S	-	-
Long (148")	F7C	-	S	-	S	-	-
	F8C	-	S	-	S	-	-
Long (148")	R1X	S	O	-	S	-	-
	R2X	-	S	-	S	-	-
Extended-Length (148")	R3X	S	O	S	O	-	-
	R3U	-	S	-	S	-	-
Long (148")	W1X	S	O/1 <sup>1,3</sup>	-	S	S	-
	W2X	-	S	-	S	-	-
Extended-Length (148")	W3X	S	O	S	O	S	-
	W3U	-	S	-	S	-	-
Long (148")	F5X	-	S	-	S	-	-
	F6X	-	S	-	S	-	-
Extended-Length (148")	F7X	-	S	-	S	-	-
	F8X	-	S	-	S	-	-
Extended-Length (148")	F4X	-	S	-	S	-	-
	F4U	-	S	-	S	-	-
Extended-Length (148")	U8X	-	-	-	S	-	-
	U8U	-	-	-	S	-	-

<sup>1</sup>Included in Bulkhead – Lockable Door with Window (47T)

<sup>2</sup>Included in Bulkhead – Window Only (47U)

<sup>3</sup>Included in Seat Pack 17 (21T)

# 2026 TRANSIT AXLE AVAILABILITY

## FRONT AXLE AVAILABILITY (PASSENGER VAN)

PASSENGER VAN		3.5L PFDi V6 (998)		3.5L EcoBoost® V6 (99G)	
		Standard Front Axle	Heavy-Duty Front Axle (41E)	Standard Front Axle	Heavy-Duty Front Axle (41E)
Long (148")	X2Y	S	-	S	-
	X9Y	-	S	-	S
Long (148")	X2C	S	-	S	-
	X9C	-	S	-	S
Long (148")	X2X	S	-	S	-
	X9X	-	S	-	S
Extended-Length (148")	U4X	-	-	-	S
	U5X	-	-	-	S

## FRONT AXLE AVAILABILITY (CUTAWAY)

CUTAWAY		3.5L PFDi V6 (998)		3.5L EcoBoost® V6 (99G)		Electric Motor (E-Transit) (99M)	
		Standard Front Axle	Heavy-Duty Front Axle (41E)	Standard Front Axle	Heavy-Duty Front Axle (41E)	Standard Front Axle	Heavy-Duty Front Axle (41E)
Regular (138")	R5P	S	O	S	O	-	-
	R7P	-	S	-	S	-	-
Long (156")	R5P	S	O	S	O	-	-
	R7P	-	S	-	S	-	-
Regular (138")	W5P	S	O	S	O	-	-
	W7P	-	S	-	S	-	-
Long (156")	W5P	S	O	S	O	-	-
	W7P	-	S	-	S	-	-
Extended-Length (178")	W5P	S	O	S	O	S	-
	W7P	-	S	-	S	-	-
Regular (138")	F6P	-	S	-	S	-	-
	F8P	-	S	-	S	-	-
Long (156")	F6P	-	S	-	S	-	-
	F8P	-	S	-	S	-	-
Extended-Length (178")	F6P	-	S	-	S	-	-
	F8P	-	S	-	S	-	-
Regular (138")	U6P	-	-	-	S	-	-
	U8P	-	-	-	S	-	-
Long (156")	U6P	-	-	-	S	-	-
	U8P	-	-	-	S	-	-
Extended-Length (178")	U6P	-	-	-	S	-	-
	U8P	-	-	-	S	-	-

<sup>1</sup>Included in Seat Pack 26 (213)

# 2026 TRANSIT AXLE AVAILABILITY

## FRONT AXLE AVAILABILITY (CHASSIS CAB)

CHASSIS CAB		3.5L PFDi V6 (998)		3.5L EcoBoost® V6 (99G)		Electric Motor (E-Transit) (99M)	
		Standard Front Axle	Heavy-Duty Front Axle (41E)	Standard Front Axle	Heavy-Duty Front Axle (41E)	Standard Front Axle	Heavy-Duty Front Axle (41E)
Regular (138")	R5Z	S	O	S	O	-	-
	R7Z	-	S	-	S	-	-
Long (156")	R5Z	S	O	S	O	-	-
	R7Z	-	S	-	S	-	-
Regular (138")	W5Z	S	O	S	O	-	-
	W7Z	-	S	-	S	-	-
Long (156")	W5Z	S	O	S	O	-	-
	W7Z	-	S	-	S	-	-
Extended-Length (178")	W5Z	S	O	S	O	S	-
	W7Z	-	S	-	S	-	-
Regular (138")	F6Z	-	S	-	S	-	-
	F8Z	-	S	-	S	-	-
Long (156")	F6Z	-	S	-	S	-	-
	F8Z	-	S	-	S	-	-
Extended-Length (178")	F6Z	-	S	-	S	-	-
	F8Z	-	S	-	S	-	-
Regular (138")	U6Z	-	-	-	S	-	-
	U8Z	-	-	-	S	-	-
Long (156")	U6Z	-	-	-	S	-	-
	U8Z	-	-	-	S	-	-
Extended-Length (178")	U6Z	-	-	-	S	-	-
	U8Z	-	-	-	S	-	-

<sup>1</sup>Included in Seat Pack 25 (212), 26 (213), 29 (216), 30 (217)

# 2026 TRANSIT AXLE AVAILABILITY

## REAR AXLE AVAILABILITY (CARGO VAN)

CARGO VAN		3.5L PFDi V6 (998)				3.5L EcoBoost® V6 (99G)				Electric Motor (E-Transit) (99M)
		Non-Limited		Limited-Slip		Non-Limited		Limited-Slip		Non-Limited
		3.73	4.10	3.73	4.10	3.73	4.10	3.73	4.10	Electric Axle
		X73	X41	X7L	X4L	X73	X41	X7L	X4L	
Regular (130")	E1Y	S	-	O/I <sup>1</sup>	O/A <sup>2</sup>	S	-	O/I <sup>1</sup>	-	-
	E2Y	-	-	-	S	-	-	S	-	-
Long (148")	E1Y	S	-	O/I <sup>1</sup>	O/A <sup>2</sup>	S	-	O/I <sup>1</sup>	-	-
	E2Y	-	-	-	S	-	-	S	-	-
Regular (130")	R1Y	S	-	O/I <sup>1</sup>	O/A <sup>2</sup>	S	-	O/I <sup>1</sup>	-	-
	R2Y	-	-	-	S	-	-	S	-	-
Long (148")	R1Y	S	-	O/I <sup>1</sup>	O/A <sup>2</sup>	-	-	S	-	-
	R2Y	-	-	-	S	-	-	S	-	-
Regular (130")	W1Y	S	-	O/I <sup>1</sup>	O/A <sup>2</sup>	S	-	O/I <sup>1</sup>	-	S
	W2Y	-	-	-	S	-	-	S	-	-
Long (148")	W1Y	S	-	O/I <sup>1</sup>	O/A <sup>2</sup>	-	-	S	-	S
	W2Y	-	-	-	S	-	-	S	-	-
Long (148")	F1Y	-	-	-	S	-	-	S	-	-
	F2Y	-	-	-	S	-	-	S	-	-
Long (148")	E1C	S	-	O/I <sup>1</sup>	O/A <sup>2</sup>	S	-	O/I <sup>1,3</sup>	-	-
	E2C	-	-	-	S	-	-	S	-	-
Long (148")	R1C	S	-	O/I <sup>1</sup>	O/A <sup>2</sup>	-	-	S	-	-
	R2C	-	-	-	S	-	-	S	-	-
Long (148")	W9C	S	-	O/I <sup>1</sup>	O/A <sup>2</sup>	-	-	S	-	S
	W2C	-	-	-	S	-	-	S	-	-
Long (148")	F7C	-	-	-	S	-	-	S	-	-
	F8C	-	-	-	S	-	-	S	-	-
Long (148")	R1X	-	-	-	S	-	-	S	-	-
	R2X	-	-	-	S	-	-	S	-	-
Extended-Length (148")	R3X	-	-	-	S	S	-	O/I <sup>1,3</sup>	-	-
	R3U	-	-	-	S	-	-	S	-	-
Long (148")	W1X	-	-	-	S	-	-	S	-	S
	W2X	-	-	-	S	-	-	S	-	-
Extended-Length (148")	W3X	-	-	-	S	S	-	O/I <sup>1,3</sup>	-	S
	W3U	-	-	-	S	-	-	S	-	-
Long (148")	F5X	-	-	-	S	-	-	S	-	-
	F6X	-	-	-	S	-	-	S	-	-
Extended-Length (148")	F7X	-	-	-	S	-	-	S	-	-
	F8X	-	-	-	S	-	-	S	-	-
Extended-Length (148")	F4X	-	-	-	S	-	-	S	-	-
	F4U	-	-	-	S	-	-	S	-	-
Extended-Length (148")	U8X	-	-	-	-	-	-	S	-	-
	U8U	-	-	-	-	-	-	S	-	-

★ = New for this model year

**2026 TRANSIT**  
**AXLE AVAILABILITY**

REAR AXLE AVAILABILITY  
(PASSENGER VAN)

<b>PASSENGER VAN</b>		<b>3.5L PFDi V6 (998)</b>				<b>3.5L EcoBoost® V6 (99G)</b>			
		<b>Non-Limited</b>		<b>Limited-Slip</b>		<b>Non-Limited</b>		<b>Limited-Slip</b>	
		<b>3.73</b>	<b>4.10</b>	<b>3.73</b>	<b>4.10</b>	<b>3.73</b>	<b>4.10</b>	<b>3.73</b>	<b>4.10</b>
		<b>X73</b>	<b>X41</b>	<b>X7L</b>	<b>X4L</b>	<b>X73</b>	<b>X41</b>	<b>X7L</b>	<b>X4L</b>
<b>Long (148")</b>	<b>X2Y</b>	S	-	O	O	S	-	O	-
	<b>X9Y</b>	-	-	-	S	-	-	S	-
<b>Long (148")</b>	<b>X2C</b>	S	-	O	O	S	-	O	-
	<b>X9C</b>	-	-	-	S	-	-	S	-
<b>Long (148")</b>	<b>X2X</b>	-	-	-	S	S	-	O	-
	<b>X9X</b>	-	-	-	S	-	-	S	-
<b>Extended-Length (148")</b>	<b>U4X</b>	-	-	-	-	-	-	S	-
	<b>U5X</b>	-	-	-	-	-	-	S	-

# 2026 TRANSIT AXLE AVAILABILITY

## REAR AXLE AVAILABILITY (CUTAWAY)

CUTAWAY		3.5L PFDi V6 (998)				3.5L EcoBoost® V6 (99G)				Electric Motor (E-Transit) (99M)
		Non-Limited		Limited-Slip		Non-Limited		Limited-Slip		Non-Limited
		3.73	4.10	3.73	4.10	3.73	4.10	3.73	4.10	Electric Axle
		X73	X41	X7L	X4L	X73	X41	X7L	X4L	
Regular (138")	R5P	-	-	-	S	S	-	O/I <sup>1</sup>	-	-
	R7P	-	-	-	S	-	-	S	-	-
Long (156")	R5P	-	-	-	S	S	-	O/I <sup>1</sup>	-	-
	R7P	-	-	-	S	-	-	S	-	-
Regular (138")	W5P	-	-	-	S	S	-	O/I <sup>1</sup>	-	-
	W7P	-	-	-	S	-	-	S	-	-
Long (156")	W5P	-	-	-	S	S	-	O/I <sup>1</sup>	-	S
	W7P	-	-	-	S	-	-	S	-	-
Extended-Length (178")	W5P	-	-	-	S	S	-	O/I <sup>1</sup>	-	S
	W7P	-	-	-	S	-	-	S	-	-
Long (156")	F1P	-	-	-	S	-	-	S	-	-
	F2P	-	-	-	S	-	-	S	-	-
Extended-Length (178")	F1P	-	-	-	S	-	-	S	-	-
	F2P	-	-	-	S	-	-	S	-	-
Regular (138")	F6P	-	-	-	S	-	-	S	-	-
	F8P	-	-	-	S	-	-	S	-	-
Long (156")	F6P	-	-	-	S	-	-	S	-	-
	F8P	-	-	-	S	-	-	S	-	-
Extended-Length (178")	F6P	-	-	-	S	-	-	S	-	-
	F8P	-	-	-	S	-	-	S	-	-
Regular (138")	U6P	-	-	-	-	-	-	S	-	-
	U8P	-	-	-	-	-	-	S	-	-
Long (156")	U6P	-	-	-	-	-	-	S	-	-
	U8P	-	-	-	-	-	-	S	-	-
Extended-Length (178")	U6P	-	-	-	-	-	-	S	-	-
	U8P	-	-	-	-	-	-	S	-	-

# 2026 TRANSIT AXLE AVAILABILITY

## REAR AXLE AVAILABILITY (CHASSIS CAB)

CHASSIS CAB		3.5L PFDi V6 (998)				3.5L EcoBoost® V6 (99G)				Electric Motor (E-Transit) (99M)
		Non-Limited		Limited-Slip		Non-Limited		Limited-Slip		Non-Limited
		3.73	4.10	3.73	4.10	3.73	4.10	3.73	4.10	Electric Axle
		X73	X41	X7L	X4L	X73	X41	X7L	X4L	
Regular (138")	R5Z	-	-	-	S	S	-	O/I <sup>1</sup>	-	-
	R7Z	-	-	-	S	-	-	S	-	-
Long (156")	R5Z	-	-	-	S	S	-	O/I <sup>1</sup>	-	-
	R7Z	-	-	-	S	-	-	S	-	-
Regular (138")	W5Z	-	-	-	S	S	-	O/I <sup>1</sup>	-	-
	W7Z	-	-	-	S	-	-	S	-	-
Long (156")	W5Z	-	-	-	S	S	-	O/I <sup>1</sup>	-	S
	W7Z	-	-	-	S	-	-	S	-	-
Extended-Length (178")	W5Z	-	-	-	S	S	-	O/I <sup>1</sup>	-	S
	W7Z	-	-	-	S	-	-	S	-	-
Long (156")	F1Z	-	-	-	S	-	-	S	-	-
	F2Z	-	-	-	S	-	-	S	-	-
Extended-Length (178")	F1Z	-	-	-	S	-	-	S	-	-
	F2Z	-	-	-	S	-	-	S	-	-
Regular (138")	F6Z	-	-	-	S	-	-	S	-	-
	F8Z	-	-	-	S	-	-	S	-	-
Long (156")	F6Z	-	-	-	S	-	-	S	-	-
	F8Z	-	-	-	S	-	-	S	-	-
Extended-Length (178")	F6Z	-	-	-	S	-	-	S	-	-
	F8Z	-	-	-	S	-	-	S	-	-
Regular (138")	U6Z	-	-	-	-	-	-	S	-	-
	U8Z	-	-	-	-	-	-	S	-	-
Long (156")	U6Z	-	-	-	-	-	-	S	-	-
	U8Z	-	-	-	-	-	-	S	-	-
Extended-Length (178")	U6Z	-	-	-	-	-	-	S	-	-
	U8Z	-	-	-	-	-	-	S	-	-

WHEEL AVAILABILITY (SRW)



16" Silver Steel Wheel with Black Hubcap  
(Standard on Standard Front Axle configurations)



16" Silver Steel Wheel with Silver Hubcaps and Exposed Lug Nuts (641)  
(Standard on Heavy-Duty Front Axle configurations)



16" Steel Wheel with Full Silver Wheel Cover (64H)  
(Standard on E-Transit)



16" Silver Aluminum Alloy Wheel (647)



16" Aluminum Alloy Wheel with Black-painted accents (644)



16" Sparkle Silver Alloy Wheel (64K) – Late Availability



16" Matte Black Alloy Wheel (64G) – Late Availability

**WHEEL AVAILABILITY (DRW)**



16" Heavy-Duty Silver  
Steel Wheel with  
Silver Hubcaps and  
Exposed Lug Nuts

(Standard on Standard  
Front Axle  
configurations)  
&

(Standard on Heavy-  
Duty Front Axle  
configurations)



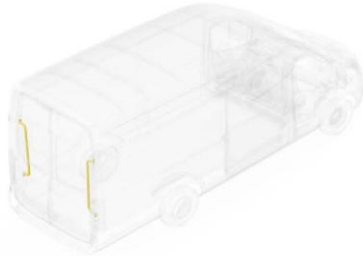
16" Heavy-Duty  
Forged Aluminum  
Wheel

(76G – Heavy-Duty  
Front Axle  
configurations) – Late Availability

(Note: Former option 76E moves to  
76G)

# WALL LINER DESCRIPTIONS

96D – Load Area Protection Pacakge	96E –“Legend” Heavy Duty Wall Liner Kit
<ul style="list-style-type: none"> <li>• Includes uninsulated wall panels, 4 mm thick 1200 gsm plastic – black color</li> </ul>	<ul style="list-style-type: none"> <li>• Includes heavy duty 6 mm thick 2120 gsm polypropylene wall liners, providing heavy duty protection</li> </ul>
<ul style="list-style-type: none"> <li>• Standard vinyl mat and wheel well covers</li> </ul>	<ul style="list-style-type: none"> <li>• Proprietary plastic compound offers improved impact and puncture resistance</li> </ul>
<ul style="list-style-type: none"> <li>• Standard cargo area lights</li> </ul>	<ul style="list-style-type: none"> <li>• Liners include 3 mm foam foil insulation on rear side to moderate temperature and decrease road noise</li> </ul>
	<ul style="list-style-type: none"> <li>• Includes cargo area headliner</li> </ul>
	<ul style="list-style-type: none"> <li>• Includes (2 or 3) 1700 lumen motion activated lighting</li> </ul>
	<ul style="list-style-type: none"> <li>• Includes insulated wheel well covers</li> </ul>
	<ul style="list-style-type: none"> <li>• Gray liner color helps to brighten up cargo interior</li> </ul>
	<ul style="list-style-type: none"> <li>• Liners have textured scratch resistant surface</li> </ul>
	<ul style="list-style-type: none"> <li>• Liners made from recycled materials</li> </ul>



### Large Grab Handle Kit (2 D-Pillar)

**ORDER CODE 60F**

Ensure ease of access and increased safety when entering and exiting your van.

- High-visibility, textured yellow coating
- Increase safety for operators reducing the risk of injury
- Increase efficiency by allowing operators to load in and out quickly in all weather conditions

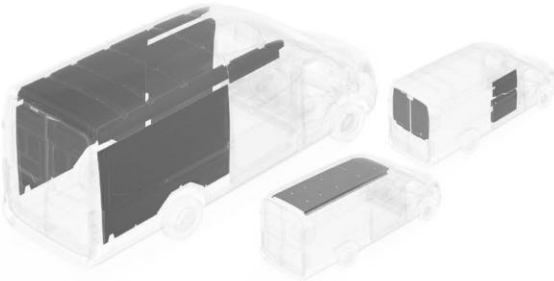


### Heavy-Duty Load Floor and Scuff Plate Protection Package

**ORDER CODE 60B**

Industry-leading tried and trusted flooring manufactured by Legend Fleet Solutions specifically to Ford specifications.

- Made of 1/2" thick composite polyethylene with an anti-slip surface
- Impact and puncture resistant, chemical resistant, moisture resistant and extreme temperature resistant
- Made from 75% recycled materials
- Includes Heavy-Duty Scuff Plate Kit

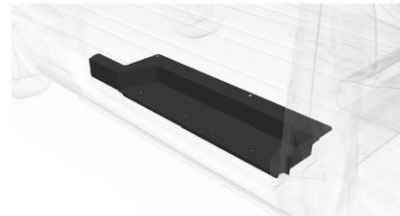


### Wall Liner Kit - Ceiling, Wall and Door Liners (Plus, Lighting and Wheel Well Covers)

**ORDER CODE 96E**

Complete interior protection against dents, dings, road noise and accidental damage. Insulated Thermal Management designed by Legend Fleet Solutions.

- Protect against dents, dings and other common damages
- Create a thermal barrier between your cargo space and the metal body with built-in insulation
- Reduce exterior road noise and protect wheel well boxes
- Motion sensor activated lights increase visibility and reduce potential for injury at night



### Heavy-Duty Scuff Plate Kit (Side & Rear Door)

**ORDER CODE 85B**

Kit includes Heavy-Duty scuff plates for rear and side door entrances. Manufactured by Legend Fleet Solutions.

- Made of durable 14 gauge steel
- Extremely anti-slip surface greatly reduces potential for injury
- Protects most used area of your work van from potential damage
- Included with Heavy-Duty Cargo Flooring (Order Code 60B)

## **KNAPHEIDE.** SINCE 1848

## VAN PARTITIONS

Create ability to heat or cool just the passenger area rather than the entire van.



Reduce the amount of noise in the passenger area coming from items in the cargo area.



Allow for full seat travel and a reasonable amount of seat recline.



Design is contoured to fit each van configuration and conform to the B-pillar trim and headliner

- Includes a 12" X 19" polycarbonate window for visibility

Constructed of ABS thermoplastic which has the mechanical properties of impact resistance and toughness while being lightweight.

- 47U (Low) - 46 lbs.
- 47U (Medium) - 61 lbs.
- 47T (Medium) - 76 lbs.
- 47T (High) - 78 lbs.



47T - Door & Window  
Transit High Roof



47T - Door & Window  
Transit Medium Roof



47U - Window Only  
Transit Medium Roof



47U - Window Only  
Transit Low Roof

*\*For option code 47T, clear opening for pass through door measures 16" x 58".*

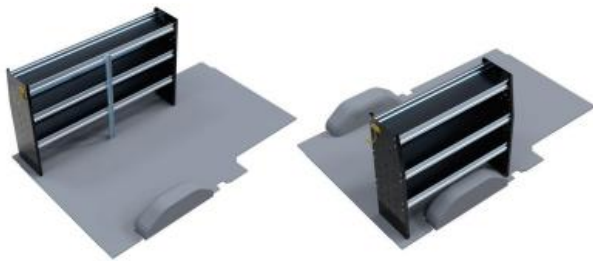
# FIXED AND FOLDING SHELVING

by **RANGER** DESIGN



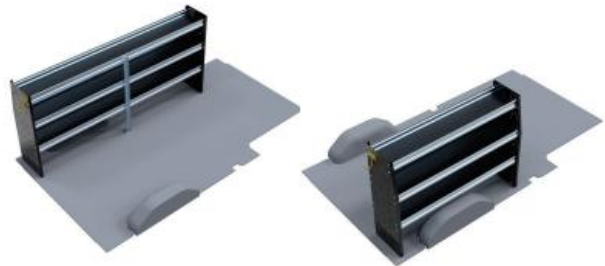
## ► FIXED SHELVING

Available for the 2025MY



STEEL SHELVING FOR THE LOW ROOF 130"

	VEHICLE	DIMENSIONS	OPTION CODES
DRIVER SIDE	LOW ROOF 130"	14D x 72W x 44.5H"	66E
PASSENGER SIDE	LOW ROOF 130"	14D x 48W x 44.5H"	66F
BOTH SIDES			66J



STEEL SHELVING FOR THE LOW ROOF 148"

	VEHICLE	DIMENSIONS	OPTION CODES
DRIVER SIDE	LOW ROOF 148"	14D x 96W x 44.5H"	66E
PASSENGER SIDE	LOW ROOF 148"	14D x 60W x 44.5H"	66F
BOTH SIDES			66J



STEEL SHELVING FOR THE MID & HIGH ROOF 148"

	VEHICLE	DIMENSIONS	OPTION CODES
DRIVER SIDE	MID ROOF 148"	14D x 96W x 62.5H"	66E
PASSENGER SIDE	MID ROOF 148"	14D x 60W x 62.5H"	66F
BOTH SIDES			66J

## ► FOLDING SHELVING

Available for the 2025MY



FOLDABLE SHELVING FOR THE MID & HIGH ROOF 148"

	VEHICLE	DIMENSIONS	OPTION CODES
DRIVER SIDE	MID & HIGH ROOF 148"	14D x 97W x 63H"	66H
PASSENGER SIDE	MID & HIGH ROOF 148"	14D x 46W x 63H"	66H

★ = New for this model year

# 2026 TRANSIT SHELVING OPTIONS

## TRADE PACKAGES by RANGER DESIGN™



### ▶ GENERAL CONTRACTOR PACKAGE



#### PARTS INCLUDED

- 2 6" Hook, 3" opening, painted
- 1 8" Swivel hook, 4" opening, painted
- 4 14" Deep plastic bins (5 for mid & high roof Transits)
- 1 Set of 5 dividers for a 12" shelf
- 1 Set of 5 dividers for a 14" shelf (2 for mid & high roof Transits)
- 1 Steel shelving unit
- 1 Steel shelving unit
- 2 Compact 2-drawer unit

Please note that the location of components may vary depending on the van configuration.

#### OPTION CODES

FORD TRANSIT  
LOW ROOF 130"  
**66M**

FOR TRANSIT  
LOW ROOF 148"  
**66M**

FORD TRANSIT MID  
& HIGH ROOF 148"  
**66M**

Available for the 2025MY

#### OPTION CODES

FORD TRANSIT MID &  
HIGH ROOF 148"  
**66L**

#### PARTS INCLUDED

- 1 3 Tier refrigerant rack for large bottles
- 1 Paper holder, extra deep, 5 slots
- 2 6" Hook, 3" opening, painted
- 1 8" Swivel hook, 4" opening, painted
- 1 Large aluminum bottle holder, with two black nylon straps
- 7 14" Deep plastic bin
- 2 Set of 5 dividers for a 14" shelf
- 1 Adjustable shelving door unit - 45" W - for 48" & 96" shelves
- 1 Steel shelving unit
- 1 Steel shelving unit
- 2 Compact 2-drawer unit

Please note that the location of components may vary depending on the van configuration.

### ▶ HVAC SHELVING PACKAGE



Available for the 2025MY

### ▶ ELECTRICIAN SHELVING PACKAGE



#### PARTS INCLUDED

- 1 Paper holder, extra deep, 5 slots
- 2 6" Hook, 3" opening, painted
- 1 8" Swivel hook, 4" opening, painted
- 7 12" Deep plastic bin
- 2 Set of 5 dividers for a 14" shelf
- 1 Reel holder with two 5/8" diameter rods
- 1 Adjustable shelving door unit - 33" W - for 36" and 72" shelves
- 1 Adjustable shelving door unit - 45" W - for 48" and 96" shelves
- 1 Steel shelving unit
- 1 Steel shelving unit
- 1 Compact 2-drawer unit
- 1 Compact 3-drawer unit

Please note that the location of components may vary depending on the van configuration.

#### OPTION CODES

FORD TRANSIT  
LOW ROOF 130"  
**66K**

FOR TRANSIT  
LOW ROOF 148"  
**66K**

FORD TRANSIT MID &  
HIGH ROOF 148"  
**66K**

Available for the 2025MY

# COLOR & TRIM AVAILABILITY

INTERIOR MATERIAL	CODE	Cargo Van	Passenger Van XL	Passenger Van XLT	Cutaway	Chassis Cab
Ebony Cloth	CB	O	-	-	O	-
Dark Palazzo Grey Cloth	CK	O	S	S	O	O
Dark Palazzo Grey Vinyl	VK	S	O	-	S	S



Ebony Cloth

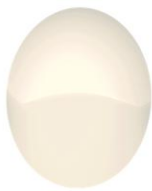


Dark Palazzo Grey Cloth



Dark Palazzo Grey Vinyl

EXTERIOR COLOR	CODE	Cargo Van	Passenger Van XL	Passenger Van XLT	Cutaway	Chassis Cab
Oxford White	YZ	■	■	■	■	■
Race Red	PQ	■	■	■	■	■
School Bus Yellow <sup>1</sup> (Fleet only)	BY	■	■	■	■	■
Agate Black Metallic <sup>1</sup>	UM	■	■	■	■	■
Ingot Silver Metallic <sup>1</sup>	UX	■	■	■	■	■
Carbonized Gray Metallic <sup>1</sup>	M7	■	■	■	■	■
Blue Metallic <sup>1</sup>	FT	■	■	■	■	■
★Wild Green <sup>1</sup> (Fleet only)	FC	■	■	■	■	■



OXFORD WHITE (YZ)



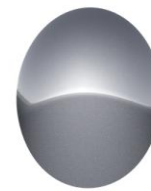
RACE RED (PQ)



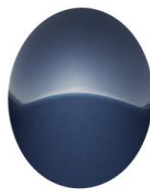
AGATE BLACK METALLIC<sup>1</sup> (UM)



INGOT SILVER METALLIC<sup>1</sup> (UX)



CARBONIZED GRAY METALLIC<sup>1</sup> (M7)



BLUE METALLIC<sup>1</sup> (FT)



★WILD GREEN METALLIC<sup>1,2</sup> (FC)



SCHOOL BUS YELLOW<sup>1,2</sup> (BY)



SQUID INK BLUE METALLIC<sup>1,2</sup>

<sup>1</sup> Metallic Paint (Extra Cost)  
★ = New for this model year

■ = Available, O = Optional, S = Standard

## ★FORD CO-PILOT 360® ASSIST 2.0 TECHNOLOGY PACKAGE FOR CARGO AND PASSENGER VAN – (61M)

### Availability:

- Cargo Van, Passenger Van XL, Standard on XLT Passenger Van

### Includes:

#### All of Ford Co-Pilot 360® standard features Plus:

- SiriusXM® with 360L
- HD Radio™
- Connected Navigation (1-Year included with Ford Connectivity Package)
- Front Fog Lamps
- Adaptive Cruise Control:

- Stop and Go (under 10,000lb GVWR only)
- Lane Centering (under 10,000lb GVWR only)
- Predictive Speed Assist

**Note:** For vehicles over 10,000 GVWR equipped with manual hand brake, Stop and Go as well as Lane Centering is not available.

- 360-Degree Camera
- Side Parking Sensors
- Reverse Brake Assist
- Blind Spot Information System (BLIS®) with Cross Traffic Alert
- Short-Arm, Power Adjusting, Power Folding Heated Mirrors with Turn Signals

**Note:** Mirror becomes Manual-Folding if Long-Arm (544) is selected Upgradeable Features/Options (additional charges may apply):

- Long-Arm, Power Adjusting, Manual-Folding Heated with Turn Signals (544)

## ★FORD CO-PILOT 360® ASSIST+ TECHNOLOGY PACKAGE FOR CHASSIS CAB/CUTAWAY – (61L)

### Availability:

- Chassis Cab/Cutaway

### Includes:

All of Ford Co-Pilot 360® standard features plus:

- SiriusXM® with 360L
- HD Radio™
- Connected Navigation (1-Year included with Ford Connectivity Package)
- Front Fog Lamps
- Adaptive Cruise Control:
  - Stop and Go
  - Lane Centering
  - Predictive Speed Assist
- Exit Warning
- Rear Cross Traffic Braking
- Blind Spot Assist
- Rear Parking Sensors Kit
- Blind Spot Information System (BLIS®) Kit with Cross Traffic Alert
- Short-Arm, Power Adjusting, Power Folding Heated Mirrors with Turn Signals

**Note:** Mirror becomes Manual-Folding if Long-Arm (544) is selected

### • Upgradeable Features/Options (additional charges may apply):

- Long-Arm, Power Adjusting, Manual-Folding Heated with Turn Signals (544)

**Note:** Not applicable with Right Hand Door Delete (60X)

## EXTERIOR UPGRADE PACKAGE – SRW (18D)

### Availability:

- Cargo Van, Passenger Van XLT (Standard), Cutaway and Chassis Cab

### Not available with:

- Passenger Van XL
- E-Transit

### Includes:

- Black Trimmed HID Headlamps (91C)
- Wiper Activated Headlamps (91B)
- Front Fog Lamps
- Honeycomb Mesh Grille with Chrome Surround
- 16" Steel Wheel with Full Silver Wheel Cover (Standard Front Axle configurations only) (64H) or 16" Silver Steel Wheel with Exposed Lug Nuts (Heavy-Duty Front Axle configurations only)

### Upgradeable Features/Options (additional charges may apply):

- 16" Silver Aluminum Alloy Wheel (Standard Front Axle configurations only) (647)
- 16" Aluminum Alloy Wheel with Black Accents (Standard Front Axle configurations only) (644)
- 16" Matte Black Alloy Wheel (Heavy-Duty Front Axle configurations only) (64G) – Late Availability
- 16" Sparkle Silver Alloy Wheel (Heavy-Duty Front Axle configurations only) (64K) – Late Availability

## EXTERIOR UPGRADE PACKAGE – DRW (18L)

### Availability:

- Cargo Van, Passenger Van XLT (Standard), Cutaway and Chassis Cab

### Not available with:

- Passenger Van XL

### Includes:

- Black Trimmed HID Headlamps (91C)
- Wiper Activated Headlamps (91B)
- Front Fog Lamps
- Honeycomb Mesh Grille with Chrome Surround
- 16" Heavy-Duty Silver Steel Wheel with Exposed Lug Nuts

### Upgradeable Features/Options (additional charges may apply):

- 16" Heavy-Duty Forged Aluminum Wheel (Heavy-Duty Front Axle configurations only) (76G) – Late Availability

## LOAD AREA PROTECTION PACKAGE– (96D)

### Availability:

- Cargo Vans

### Not available with:

- Windows-All-Around, Fixed (17F)
- Heavy-Duty Scuff Plate Kit (85B), unless ordered with Heavy-Duty Cargo Flooring (60B)
- 11,000lb GVWR Configurations

### Includes:

- Full-Height 4mm thick Polypropylene Cargo Area Panels
- Vinyl, Front and Rear (16E) (includes Wheel Well Liners)

### Upgradeable Features/Options (for additional charge):

- Heavy-Duty Cargo Flooring (60B)

## INTERIOR UPGRADE PACKAGE – CUTAWAY/CHASSIS CAB (47A)

### Availability:

- Cutaway and Chassis Cabs

### Not available with:

- E-Transit
- Right Hand Door Delete (60X)

### Includes:

- ★ 2-way manual Driver and Passenger heated seats (21M)

### Upgradeable Features/Options (for additional charge):

- Dark Palazzo Gray Cloth, 2-way manual Driver and 2-way manual Passenger seat are only available with 11,000lb GVWR configurations (21C)
- Dark Palazzo Gray Cloth, 10-way power Driver and 10-way power Passenger seats (21Q)

**BUILDERS PREP PACKAGE – (47E)****Deletes:**

- Rear Floor Covering
- Rear-Seats and Restraints
- Rear-Seat Rails and Fasteners

**Availability:**

- Passenger Van XL and Passenger Van XLT

**Includes:**

- Dual AGM Batteries (63E)
- Front/Rear Aux A/C and Heater (Driver controlled) (57G) when Auxiliary Heater / AC Prep Package without Rear Controls (62C) are not ordered
- Modified Vehicle Wiring System (53K)
- Auxiliary Fuse Panel with High Spec Interface (87E)
- Vinyl, Front only (16C) with Passenger Van XL and Carpet, Front only (16G) with Passenger Van XLT
- Less Rear Seat (96K)

**Upgradeable Features/Options (for additional charge):**

- Auxiliary Heater / AC Prep Package without Rear Controls (62C) (Medium and High Roof only)
- Black HID Headlamps (91C)

**MODIFIED VEHICLE WIRING SYSTEM – (53K)****Availability:**

- Cargo Van, Passenger Van XL, Passenger Van XLT, Cutaway (Standard) and Chassis Cab (Standard)

**Required (Cargo Van, Passenger Van XL and Passenger Van XLT Only):**

- Dual AGM Batteries (63E)

**Includes:**

- Modified vehicle connections for customized wiring harness provisions

**RV PREP PACKAGE – (47D)****Availability:**

- Cargo Van

**Includes:**

- Modified Vehicle Wiring System (53K)
- Heavy-Duty Trailer Tow Package (53B)
- Dark Palazzo Gray Cloth, 4-way manual swivel Driver and 4-way manual swivel Passenger (21T)
- Black Trimmed HID Headlamps (91C)
- Wiper Activated Headlamps (91B)
- Front Bumper, Body Colored (53G)
- Front Fog Lamps
- Carpet, Front only (16G)
- 6 speakers (4 front/2 rear)

**Upgradeable Features/Options (additional charges may apply):**

- Dark Palazzo Gray Cloth, 4-way manual swivel Driver and 4-way manual swivel Passenger seats (218)

**Not available with:**

- Bulkhead – Lockable Door with Window (47T)
- Bulkhead – Window Only (47U)
- Load Area Protection Package (96D)
- Heavy-Duty Cargo Flooring (60B)
- 9,900lb DRW GVWR configurations
- E-Transit

**Note 1:** Rear speakers are shipped in a dunnage box.

**RIGHT HAND DOOR DELETE – (60X)****Availability:**

- Cutaway

**Not available with:**

- Motorhome Prep Package (47M)
- Interior Upgrade Package – Cutaway/Chassis Cab (47A)

**Includes:**

- Black HID Headlamps (91C)
- Passenger Seat Delete (21J)
- Exterior Mirror Delete (54X) when Ford Co-Pilot360® Assist+ (61L) is not selected

**Upgradeable Features/Options (for additional charge):**

- Passenger Seat Delete with Ebony Cloth Driver Seat (211)
- Long Arm, Power Adjusting, Manual-Folding Heated with Turn Signals (544) if Ford Co-Pilot360® Assist+ (61L) is selected

**Note 1:** Intended for upfitters who modify the factory roof

**Note 2:** Audio quality may slightly be diminished due to the deletion of the right hand door speaker.

**HEAVY-DUTY TRAILER TOW PACKAGE – (53B)****Availability:**

- Cargo Van, Passenger Van XL and Passenger Van XLT

**Not available with:**

- Rear Tow Hook
- E-Transit

**Includes:**

- Tow/Haul Mode with Trailer Wiring Provisions
- 4/7 Pin Connector Assembly and Rear Jumper
- Relay system for backup/B+/running lights
- Frame mounted hitch receiver

**Included with:**

- RV Prep Package (47D)

**NOTE:** This package does not include a Trailer Brake Controller (67D). Additionally, this option must be added at time of ordering. Neither a Ford or aftermarket trailer brake controller can be added later (after vehicle is built).

**TOW/HAUL MODE WITH TRAILER WIRING PROVISIONS – (53D)****Availability:**

- Cargo Van, Passenger Van XL, Passenger Van XLT, Cutaway and Chassis Cab

**Not available with:**

- E-Transit

**Includes:**

- Trailer Wiring Harness to rear of vehicle for upfit
- Trailer Sway Control (TSC)
- 4/7 Pin Connector Assembly and Rear Jumper
- Tow/Haul Mode

**Included with:**

- Motorhome Prep Package (47M)

**Note 1:** This package does not include a Trailer Brake Controller (67D). Additionally, this option must be added at time of ordering. Neither a Ford or aftermarket trailer brake controller can be added later (after vehicle is built)

**Note 2:** This package does not include the frame mounted hitch receiver.

**MOTORHOME PREP PACKAGE – (47M)****Availability:**

- Cutaway

**Not available with:**

- Right Hand Door Delete (60X)
- 9,950lb DRW GVWR configurations
- E-Transit

**Includes:**

- Tow/Haul Mode with Trailer Wiring Provisions (53D)
- Dual AGM Batteries (63E)
- Modified Vehicle Wiring System (53K)
- Dark Palazzo Gray Cloth, 4-way manual swivel Driver and 4-way manual swivel Passenger (21T)
- Black HID Headlamps (91C)
- Auxiliary Fuse Panel with High Spec Interface Connector (87E)

**Upgradeable Features/Options (additional charges may apply):**

- Dark Palazzo Gray Cloth, 4-way manual swivel Driver and 4-way manual swivel Passenger seats (218) (only applicable on 11,000 GVWR units)

**SHUTTLE BUS PREP PACKAGE – (47S)****Availability:**

- Cutaway

**Not available with:**

- E-Transit

**Includes:**

- Exterior Upgrade Package (18D) on SRW configurations
- Exterior Upgrade Package (18L) on DRW configurations
- Dual AGM Batteries (63E)
- Auxiliary Fuse Panel with High Spec Interface Connector (87E)
- Modified Vehicle Wiring System (53K)

**Applicable Options (not part of Prep Package):**

- Right Hand Door Delete (60X)

**SCHOOL BUS PREP PACKAGE – (47C)****Availability:**

- Cutaway
- Fleet only

**Not available with:**

- Extended Length configurations (Gas Engines only)

**Includes:**

- Safety Glass
- Right Hand Door Delete (60X)
- Dual AGM Batteries (63E)
- Auxiliary Fuse Panel with High Spec Interface Connector (87E)
- Dual-note Horn
- Modified Vehicle Wiring System (53K)

**NOTE:** Requires Passenger Seat Delete (21J) School Bus Yellow (BY) Paint

**MULTI-FUNCTION SCHOOL ACTIVITY BUS (MFSAB) PREP PACKAGE – (47Q)****Availability:**

- Cutaway
- Fleet only

**Not available with:**

- Extended Length configurations (Gas Engines only)

**Includes:**

- Safety Glass
- Right Hand Door Delete (60X)
- Dual AGM Batteries (63E)
- Auxiliary Fuse Panel with High Spec Interface Connector (87E)
- Dual-note Horn
- Modified Vehicle Wiring System (53K)

**NOTE:** Requires Passenger Seat Delete (21J) and Oxford White (YZ) Paint

**AMBULANCE PREP PACKAGE – CARGO VAN (47B)****Availability:**

- Medium High Roof Cargo Van with Sliding Passenger-side Cargo Door
- 3.5L EcoBoost® V6 (99G)

**Not available with:**

- Passenger Seat Delete (21J, 21K, 211)
- Extended Fuel Tank (655)
- E-Transit

**Includes:**

- Dual AGM Batteries (63E)
- Dual Alternator (63C)
- Fixed Rear Cargo Door Glass and Fixed Passenger-side Glass (17B)
- 3.73 Limited-Slip Axle (X7L)
- Modified Vehicle Wiring System (53K)
- Auxiliary Fuse Panel with High Spec Interface Connector (87E)
- Dual-note Horn

**Upgradeable Features/Options (for additional charge):**

- None

**UPFITTER PACKAGE – (67C)****Availability:**

- Cargo Van, Passenger Van XL, Passenger Van XLT, Cutaway and Chassis Cab

**Not available with:**

- E-Transit

**Includes:**

- High Capacity Upfitter Switches
- Large Center Console (67E)
- Auxiliary Fuse Panel with High Spec Interface Connector (87E)
- Dual AGM Batteries (63E)
- Modified Vehicle Wiring System (53K)

**NOTE:** Requires Rear Seat Delete (96K) on 301A & 302A Passenger Van(s)

**PARCEL DELIVERY PACKAGE – (47G)****Availability:**

- Cargo Van
  - 3.5L PFDi V6 (998) (Medium/High Roof SRW and DRW Configuration F4X)
  - E-Transit (Long and Extended Lengths only)
- Cutaway
  - 3.5L PFDi V6 (998) (SRW configurations and DRW configuration F6P)

**Includes:**

- Full Rear Compartment Lighting (15F) – Cargo Van only
- Close Assist feature (43H) – Cargo Van only
- Ebony Cloth 2-way manual Driver and 2-way manual Passenger seats without armrests (219)
- Delivery Assist Package
  - When in park, automatically switches:
  - Closes any open windows
  - Locks the door once the driver leaves the vehicle

**Additional Options to consider (may result in additional charges)**

- B-Pillar Assist Handle (41B) – Medium and High Roof Cargo Van only
- Passenger Seat Delete Ebony Cloth, 2-way manual Driver seat without an armrest (211) – Cutaway only and is included when Right Hand Door Delete (60X) is selected

**Not Available with:**

- Low roof variants
- Interior Upgrade Package – Cargo Van (96C)
- Load Area Protection Package (96D)
- Exterior Upgrade Package (18D/18L)
- Upfitter Package (67C)
- Trailer Brake Controller (67D)
- Pro Power Onboard™ – 2.4kW (90E)

**FLEET FUEL ECONOMY PACKAGE – (98B)****Availability:**

- 3.5L PFDi V6 (998)
- Fleet Orders Only

**Includes:**

- Smart Acceleration Truncation
- Auto Start-Stop Switch Delete
- Engine Idle Shutdown 5 minute timer
- 75-mph Governed Top Speed

**Upgradeable Features/Options (for additional charge):**

- •Engine Idle Shutdown 3 Minute Timer
- Engine Idle Shutdown 10 Minute Timer (55F)
- •Engine Idle Shutdown 20 Minute Timer (55H)
- •70-mph Governed Top Speed (52H)
- •65-mph Governed Top Speed (52M)

**Note 1:** With this package, EcoMode is always on

**Note 2:** Auto Start-Stop Switch Delete deletes Auto Stop-Start Technology disable button on dash, however, the feature remains permanently active

**FLEET SAFETY PACKAGE – (59C)****Availability:**

- Fleet Orders Only

**Includes:**

- Driver Alert
- Auto High Beam
- Reverse Speed Limiter
- **Additional Options to consider (may result in additional charges):**

Fleet Fuel Economy Package (98B)

**NOTE:** With this package, the safety features are permanently set to “ON” with no ability to disable or change settings after vehicle is produced.

# PACKAGED OPTIONS

**LIVERY PACKAGE – (47L) (LIVERY FIN REQUIRED)\***

**Availability:**

- Medium or High Roof Passenger Van XLT with Long or Extended Length
- Fleet only (Livery FIN)

**Not Available with:**

- Builder's Prep Package (47E)

**Includes:**

- Dark Palazzo Gray Cloth, 10-way power heated Driver and 10-way power heated Passenger seats (21Q)
- Black Trimmed HID Headlamps (91C)
- 16" Steel Wheel with Full Silver Wheel Cover (Standard Front Axle configurations only) (64H) or 16" Silver Steel Wheel with Exposed Lug Nuts (Heavy-Duty Front Axle configurations only) – SRW
- 16" Heavy-Duty Silver Steel with Exposed Lug Nuts, Standard and Heavy-Duty Front Axle configurations – DRW
- Keyless Entry Keypad (52C)
- Dual AGM Batteries (63E)
- Wheel Well Liners – Black (Front only) (15C)
- Upgradeable Features/Options (additional charges may apply):
- 16" Heavy-Duty Forged Aluminum Wheel – DRW (Heavy-Duty Front Axle configurations only) (76G) – Late Availability

**EMISSIONS REQUIREMENT LOCATIONS**

**CALIFORNIA EMISSIONS STATES**

CA, CT, DE, MA, MD, ME, NJ, NY, OR, PA, RI, VT, WA

**CROSS BORDER STATES**

AZ, DC, ID, NH, NV, OH, VA, WV

**FEDERAL EMISSIONS STATES**

Remaining States/Regions

**EMISSIONS STANDARD/OPTIONAL EQUIPMENT**

**50-STATE EMISSIONS SYSTEM** ..... **425**

Standard equipment on all Transit gas engine configurations.

**ZERO EVAPORATED EMISSIONS SYSTEM**

Standard equipment on all E-Transit configurations ..... **425**

**MISCELLANEOUS**

COV Required ..... **79V**

Priced DORA ..... **C09**

**VEHICLE SPECIAL ORDER (VSO)**

FLEET ONLY. See [www.fmcdealer.com](http://www.fmcdealer.com) for current VSO Order Guide. This live guide includes VSO option codes, descriptions and pricing. Email [vsomail@ford.com](mailto:vsomail@ford.com) or call 1.800.34.FLEET, menu 4 w/any VSO questions you may have.

★ = New for this model year

## FUEL ECONOMY

TRUCKS W/GROSS VEHICLE WEIGHT RATINGS OVER 8,500 POUNDS ARE NOT INCLUDED IN THE EPA FUEL ECONOMY RATING SYSTEM. FUEL ECONOMY INFORMATION ON THESE MODELS IS GENERALLY NOT AVAILABLE BECAUSE OF WIDE VARIANCES IN VEHICLE LOADING AND OPERATIONAL CONDITIONS BETWEEN VARIOUS CUSTOMER APPLICATIONS.

## ENGINE HORSEPOWER AND TORQUE RATINGS

ENGINE	TRANSMISSION	NOMINAL COMPRESSION RATIO	50-STATES	
			HORSEPOWER H.P. @ RPM	TORQUE LB.-FT. @ RPM
3.5L PFDi V6	10-Speed Automatic Overdrive	11.8:1	275HP @ 6, 250	260 @ 4,000
3.5L EcoBoost® V6	10-Speed Automatic Overdrive	10.0:1	300HP @ 5,000	400 @ 2,500
Electric Motor (E-Transit)	Single-Speed	N/A	198kW / 266 HP	317 LB.-FT.